



novotegra
Mounting
solutions
Flat roof II



Mounting solution for flat roofs



- Self-engineered mounting system, established on the market since 2006
- Solutions for different roof membranes
- Easy and completely free of charge planning via online tool Solar-Planit
- Free first-time installation support
- Quick mounting thanks to pre-assembled parts
- TÜV and DEKRA certified quality, CE marking
- Static calculation according to Eurocode and SIA norms
- 12 year product warranty



novotegra flat roof system east-west II

With our east-west II mounting system, you can optimize the use of the surface area of your flat roof. With an elevation of 13° electricity production is distributed evenly throughout the entire day.

Due to the optimized aerodynamics of our system it requires very little ballasting: an advantage especially for flat roofs with low load reserves.

Your benefits:

- No penetration of the roof membrane
- Optimization of the use of the roof surface
- Electricity production is distributed evenly throughout the entire day, no peaks
- Quick and easy mounting
- Base trough also acts as a cable channel – tidy and without loose cables, enough space for plugs; cable bracket and cover for optional use
- Different base troughs: blank, with PE separation layer 6 mm or with PE pads for cross drainage
- Suitable for module widths of 920-1200mm



novotegra flat roof system south (closed) II

With our flat roof south mounting system you can choose a flexible row distance. Due to its south orientation and elevation of 13° we catch the sun when she smiles at us the most.

Due to the optimized aerodynamics of our system it requires very little ballasting. Thanks to Solar-Planit you can even put a single module on the roof and make a static calculation incl. ballasting.

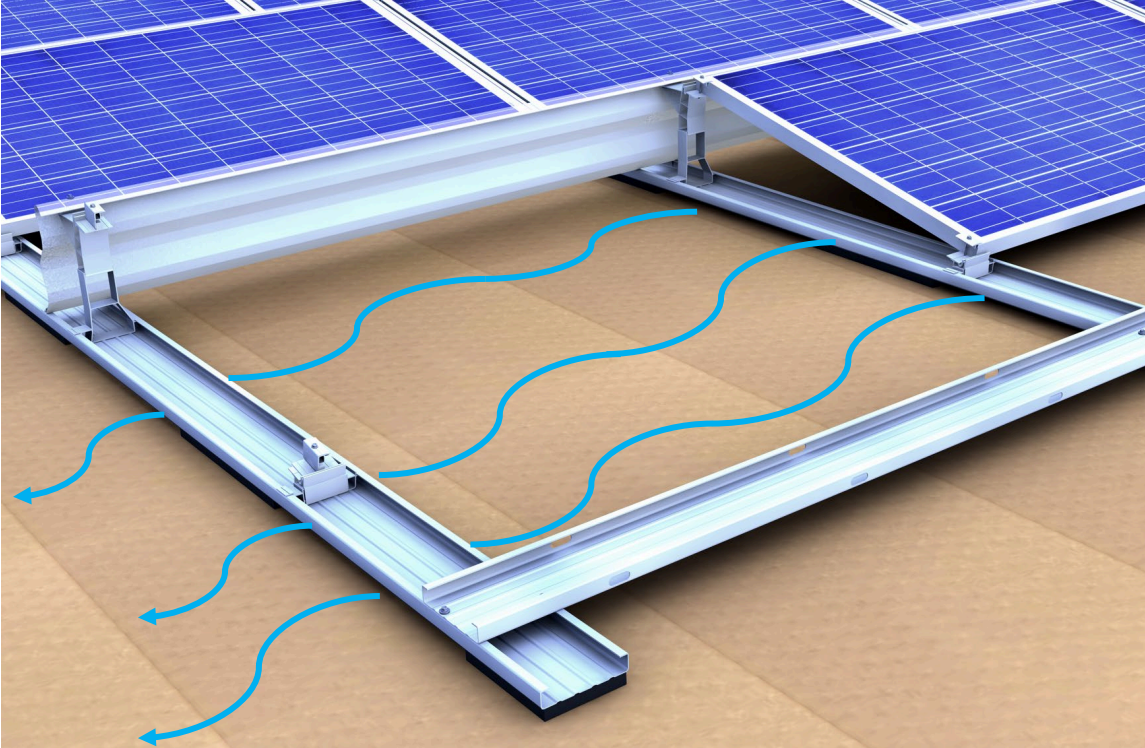
Your benefits:

- No penetration of the roof membrane
- Quick and easy mounting
- Base trough also acts as a cable channel – tidy and without loose cables, enough space for plugs; cable bracket and cover for optional use
- Different base troughs: blank, with PE separation layer 6 mm or with PE pads for cross drainage
- Suitable for module widths of 920-1200mm

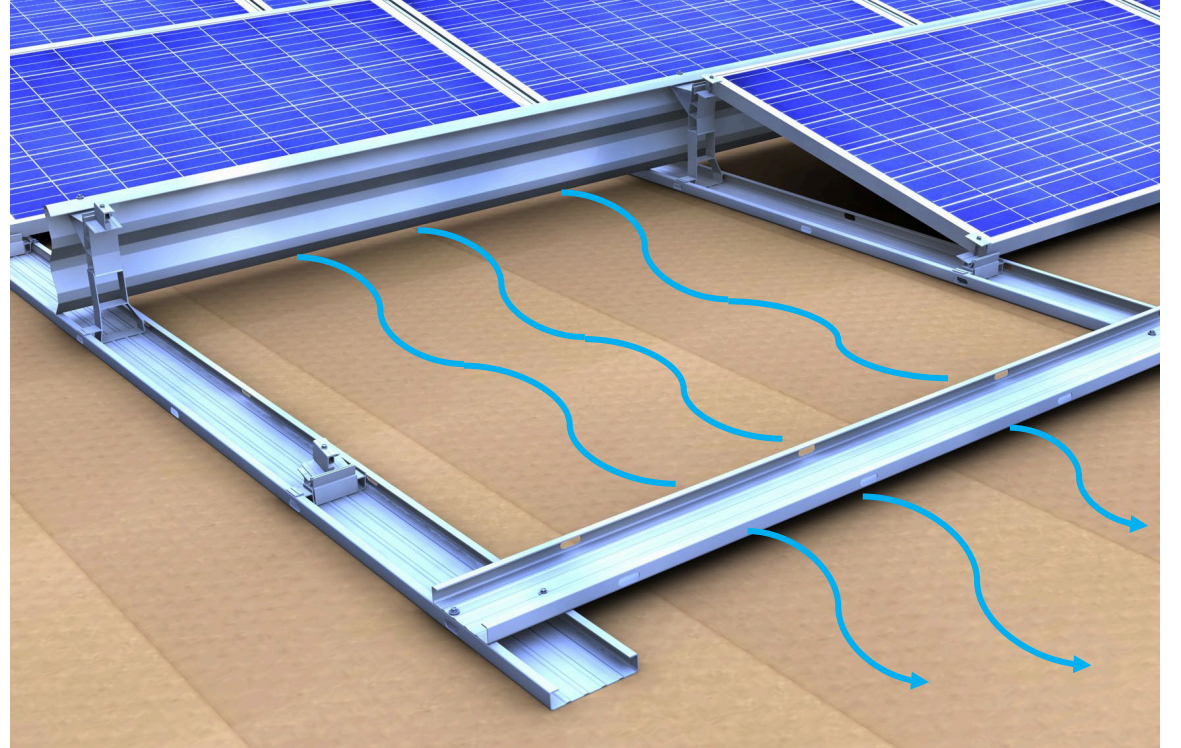


Base trough with cross drainage or separation layer

Base trough with cross drainage

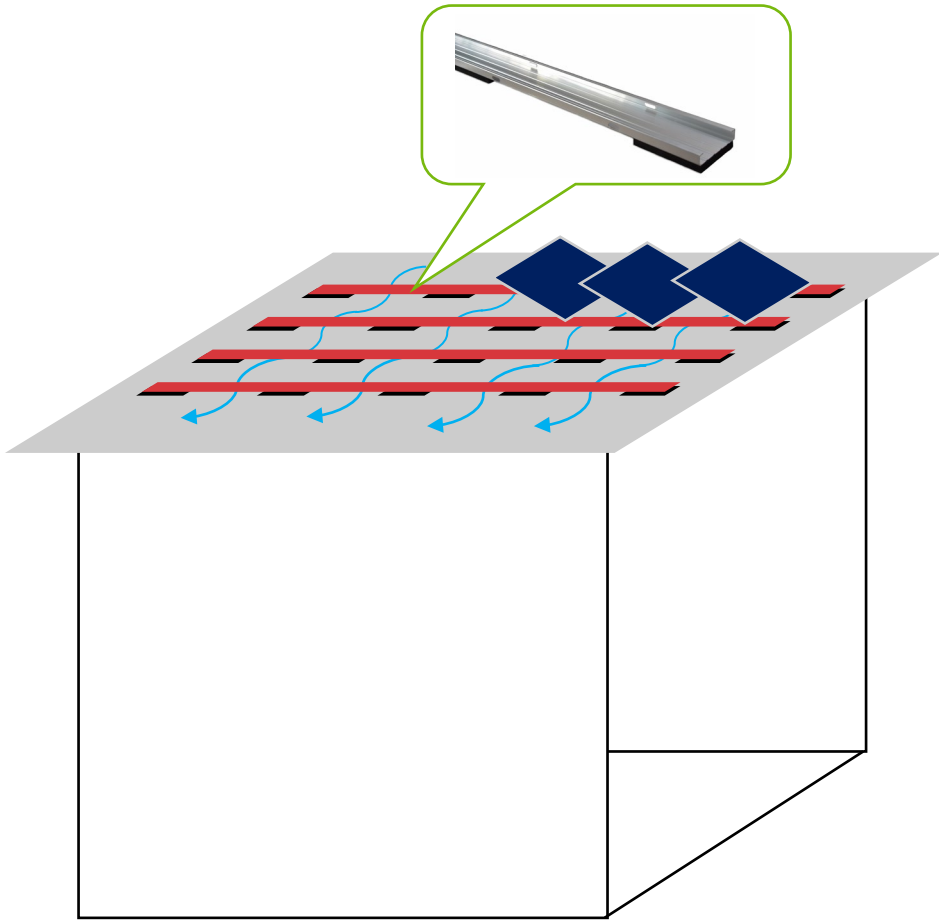


Base trough with separation layer

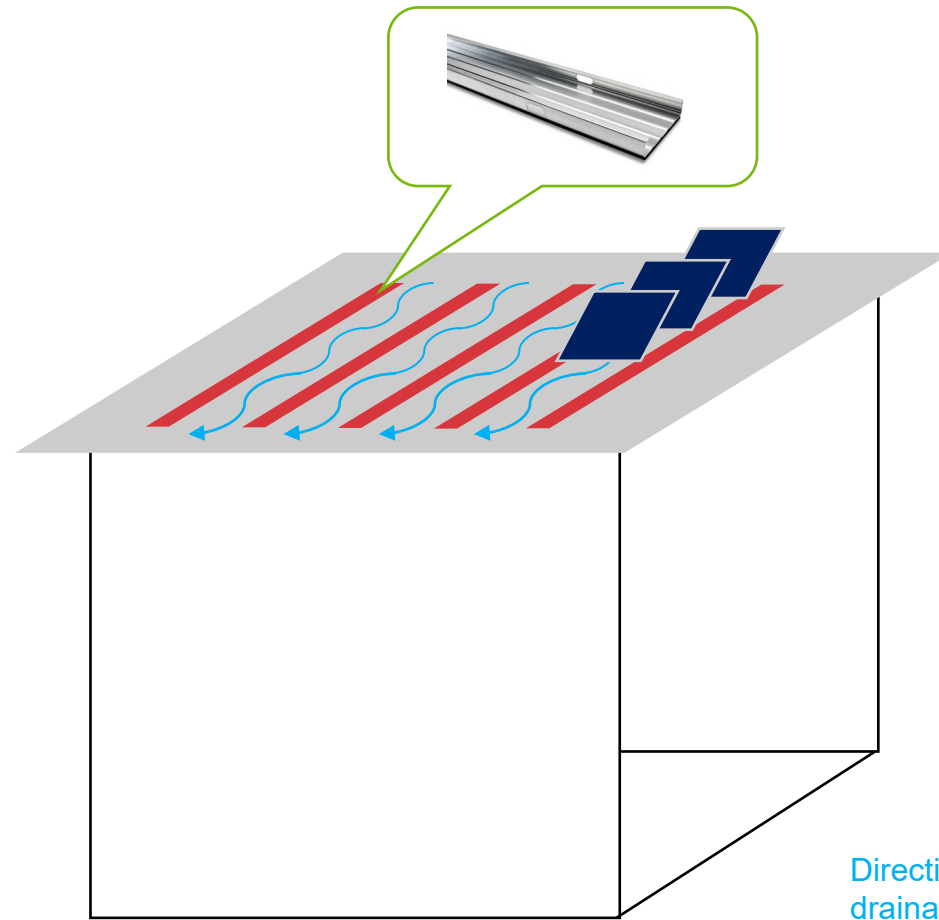


* Direction of roof drainage

Base trough with cross drainage or separation layer






Base trough with cross drainage



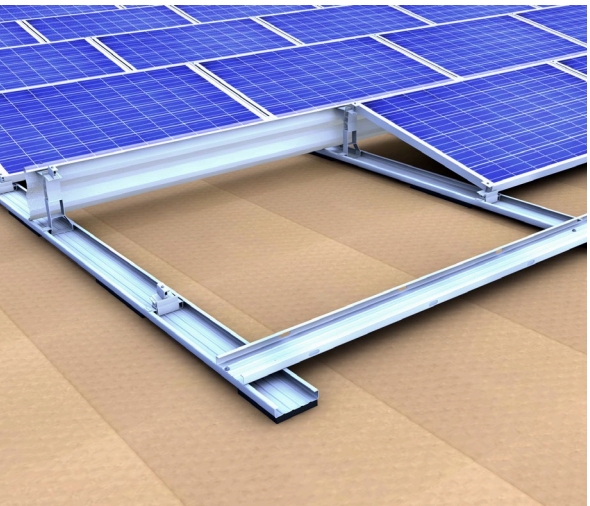
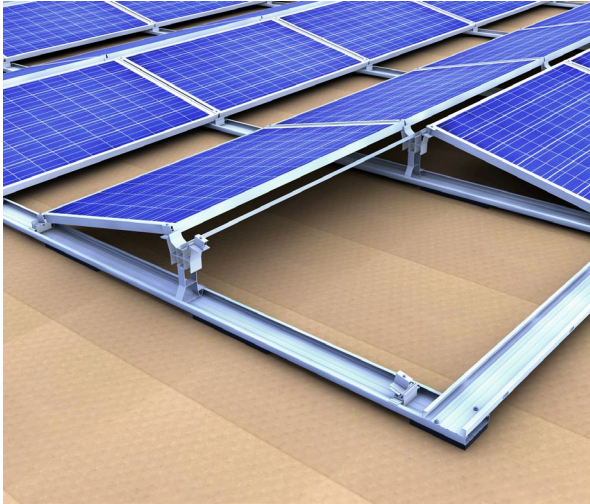
Base trough with separation layer

Direction of roof
drainage
Base trough
PE pads

Selecting the right base trough

Roof type Rail	Base trough blank	BT separation layer	BT cross drainage
			
Bitumen roof		✓	✓
Foil roof (EPDM / PVC / TPO / FPO)		✓	✓
Gravel roof	✓	(✓)	(✓)

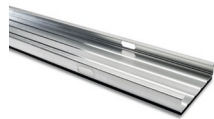
novotegra flat roof system east-west and south II | Details



- Middle and end clamp for fixing modules
- Screw with drill bit for easy assembly
- Entirely pre-assembled



- Rear module support to clip into the base trough
- Predrilled mounting hole for easy positioning of the module and to prevent roof skin damages from metal chips



- Base trough without pad, with protection layer or PE pads
- Continuous base troughs for optimum load redistribution across the system to minimize ballast requirement
- Base trough with rounded edges and elongated holes for drainage, to prevent water accumulation in the base trough

More components



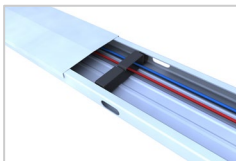
Base trough connector set 150-30 I

Base trough connector for the extension of base troughs.



Base trough expansion joint 150-30

Base trough expansion joint for connection of two base troughs as expansion joint.



Top cover base trough 150-30

Top cover for the base trough when used as a cable channel.



Aluminium edge protector self-adhesive

Aluminium edge protector self-adhesive for rail ends and cut rail joints of base troughs.



Flat roof mounting screw

Self-drilling screw or thin sheet screw with 8 AF hexagon drive for connecting flat roof components.



Base foot set 13° 150-30

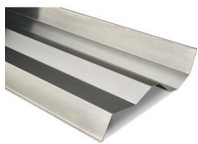
Front module support of the flat roof system generation II, to clip into the base trough.

More components



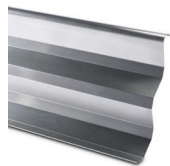
Support brace 20x20x1,5

Support brace for load transfer, fixed on the flat roof module support set east-west II.



Wind Deflector 13° 1,85m east-west

Wind deflector for flat roof system east-west II for mounting areas with missing module due to interfering objects.



Wind Deflector 13°

Wind deflector for flat roof system closed II for wind deflection and ballast reduction.



Ballast trough 120-30 530 mm

Ballast trough to hang into the base trough and secure placement of large format ballast.



Grounding connector set AF 18

Grounding connector set sufficient for clamping cables of 6-16 mm² or wire with diameter 6-10mm.

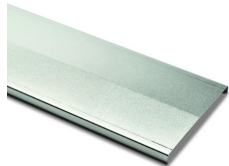
More components



Contact latch module clamp

Contact latch for equipotential bonding / lightning current carrying capacity between module frame and mounting system.

optional



Top cover base trough 150-30 3.00m

Cover for the base trough if using as cable channel. Protects cables against damage from UV radiation, animals and humidity.

optional

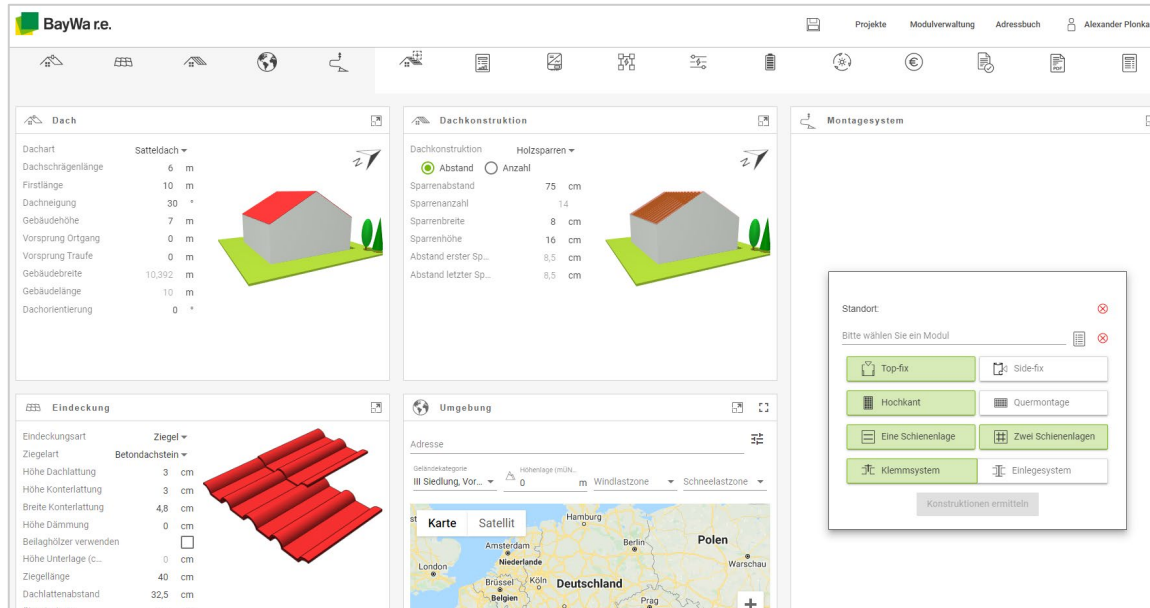


Base trough cable bracket

Cable bracket for secure laying of cable in the base trough 150-30.

optional

Our free planning tool Solar-Planit



Our Solar-Planit

- Complete system planning
 - Mounting system design & static calculation
 - Module configuration
 - Inverter design & suitable storage
 - Yield & profitability
 - System documentation
- System planning in a few minutes thanks to intuitive operation
- Free and web-based incl. free webinars
- Transmission to our webshop
- Availability can already be taken into account during planning

Use our [Solar-Planit!](#)

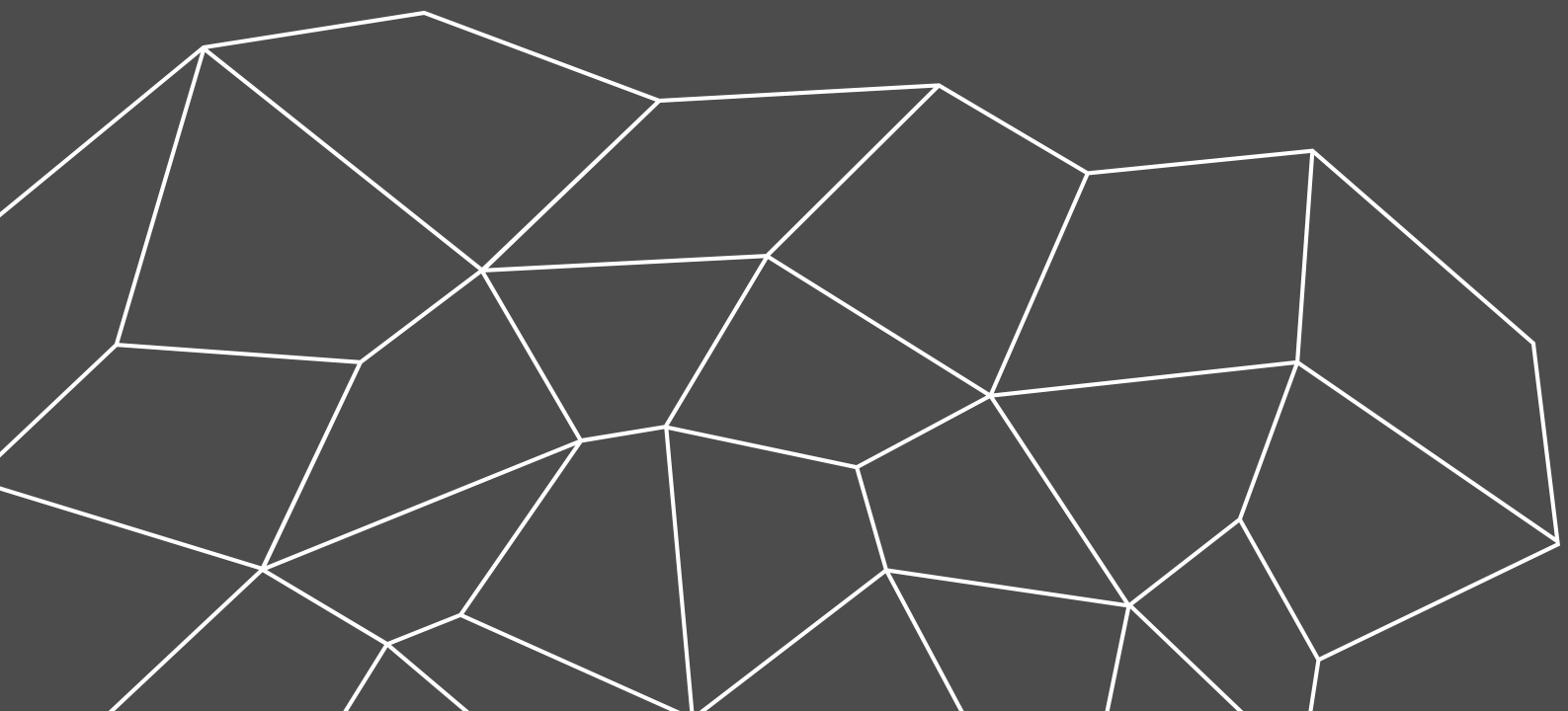
Our free first-time installation support



Our first-time installation support

- Support and instruction by a technical consultant during installation
- Instruction and support around the mounting system
- Discussion of the results of the static calculation
- Tips & tricks around novotegra
- For free!

For more information, please visit our [Website](#) or contact your personal representative!



Thank you!

novotegra GmbH

info@novotegra.com

Copyright

© Copyright novotegra GmbH, 2021

The content of this presentation (including text, graphics, photos, tables, logos, etc.) and the presentation itself are protected by copyright. They were created by novotegra GmbH independently.

Any dissemination of the presentation and/or content or parts thereof is only permitted with written permission by novotegra without written permission of novotegra, this document and/or parts of it must not be passed on, modified, published, translated or reproduced, either by photocopies, or by others – in particular by electronic procedures. This reservation also extends to inclusion in or evaluation by databases. Infringements will be prosecuted.