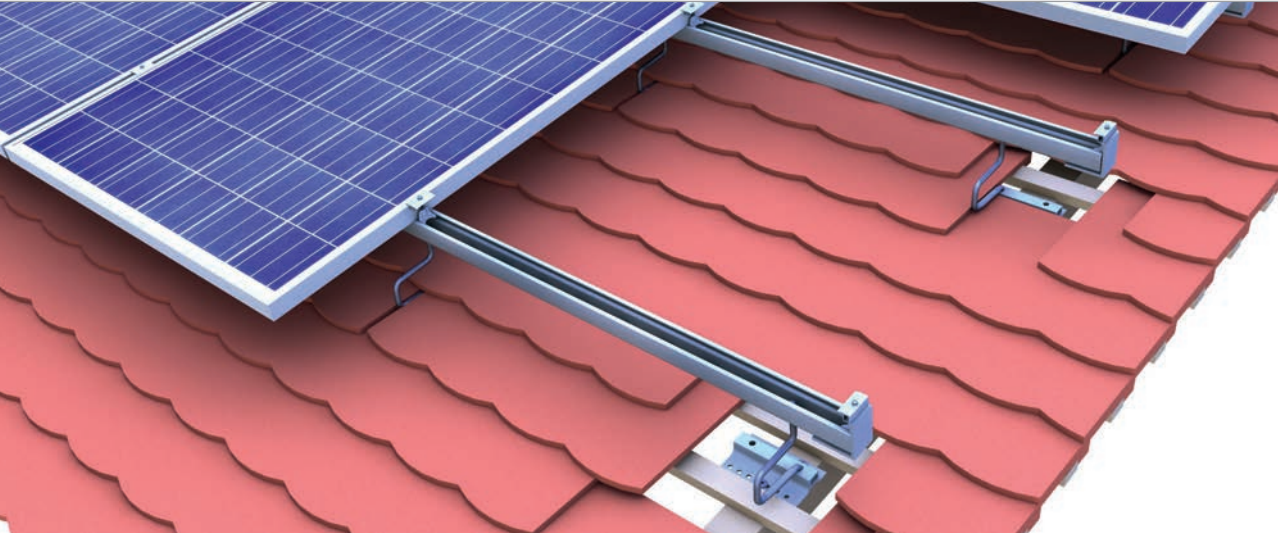


## Beavertail tile roof | clamping system

novotegra top-fix



novotegra top-fix – single-rail clamping system on beavertail tile roofing with modules installed in portrait.

### Solution for beavertail tiles

For the installation of our system on a beavertail tile roof, you can use the beavertail roof hook set or for lesser loads the flex roof hook set. The various sets consist of a base profile and a bracket which is screwed into the base profile. Due to their special shape, both the beavertail and the flex roof hooks are ideal for the small spaces between roof battens on a beavertail tile roof. In addition: The bracket fits between two tiles and not under the tile.

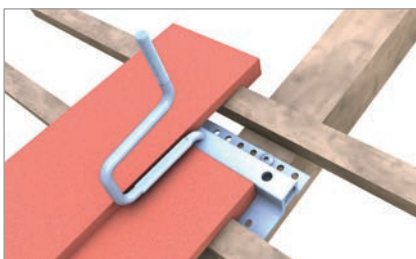
The roof hook sets are three-way adjustable and thus allow for the levelling of uneven roof surfaces to achieve a homogeneous module field. Because the bracket does not sit on the roof tile, you don't need any expensive underlay plates. This reduces the overall system costs.

The C-rail is connected easily, quickly and permanently to the roof hook using a conventional screw connection with a locking nut – it then serves simultaneously as a cable channel. All end and middle clamps are pre-assembled and also available in a black anodised variant. Be it modules installed in portrait or landscape or a single-rail or cross-rail installation, thanks to reliable clamping technology, modules can be attached to C-rails quickly and securely.

The end clamps close the module field flush to the C-rails, making the substructure nearly invisible – for visually perfect installations.

### Your benefits

- Secure, stable and durable
- Three-way adjustable roof hooks
- The C-rail also acts as a cable channel
- Double roof hooks for heavy snow loads
- Quick and easy mounting
- Excellent rear ventilation of the module
- Only three clamps for all frame heights
- Simple, Eurocode-compliant layout with our Solar-Planit online tool
- No beavertail sheet metal tile required



Position of the bracket with beavertail tiling

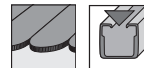


Rail connector C 47 S for profile chambers



End cap on the edge of the installation

## Clamping system



Middle clamp or  
end clamp



Item no. 03-000276



Item no. 03-000284



Item no. 03-000275



Item no. 03-000277

## novotegra top-fix

End cap



Item no. 03-000259

Connector



Item no. 03-000925

Rail



Item no. 03-001369

Roof hook



Item no. 03-000258

Screws



Item no. 03-000281



Type Approved  
Regular  
Production  
Surveillance  
[www.tuv.com](http://www.tuv.com)  
ID 1111212187



BayWa r.e. Solar Energy Systems GmbH | Eisenbahnstraße 150 | D-72072 Tübingen  
Phone +49 7071 98987-0, Fax +49 7071 98987-10, [solarenergysystems@baywa-re.com](mailto:solarenergysystems@baywa-re.com)  
[www.baywa-re.com](http://www.baywa-re.com), [solar-distribution.baywa-re.de](mailto:solar-distribution.baywa-re.de), [novotegra.baywa-re.com](http://novotegra.baywa-re.com)

Have you already seen it?

To our novotegra YouTube channel.  
There you will find helpful videos for  
installation assistance.

