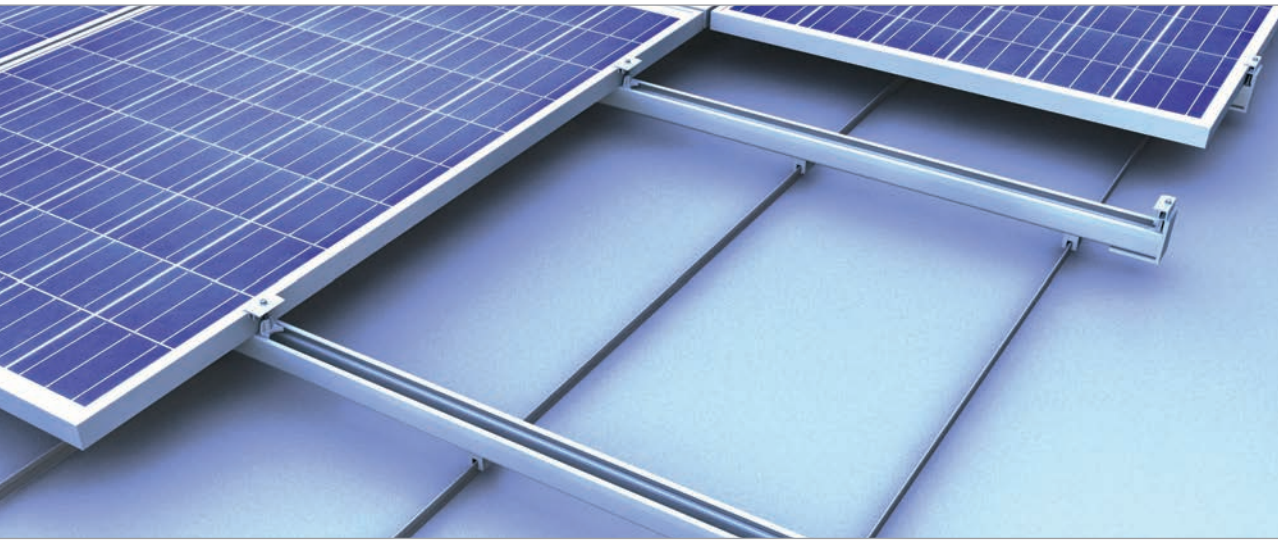


Seamed metal roof | clamping system



Single-rail clamping system with modules installed in portrait

Perfect for seamed metal roofs

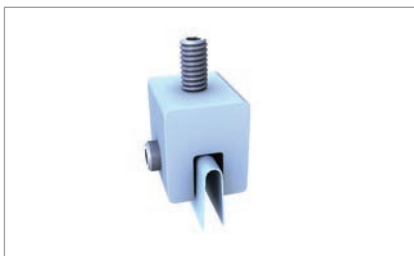
Be it a standing seam roof, a rounded seam roof or a profiled sheet roof, such as a Zambelli RibRoof or Domico GBS: Our novotegra clamping system, which has proven itself over years of service, ensures the reliable, stable and secure attachment of your photovoltaic installation on any seamed metal roof.

With the roof seam clamping technology, our mounting system is attached directly to the roof seam: The load is transferred centric in to the seam. Our clamping system for seamed metal roofs can also be used on standing seam roofs made of copper. They have a high production quality and comprise durable and corrosion-resistant components – perfect for the individual requirements of the photovoltaic installation on site.

Our clamping system is quick and easy to fix to the seamed metal roof. It comprises only three components: the C-rails, the seamed metal and the module clamps. The modules are installed vertically. The module clamps are available in three sizes – and in either blank aluminium or black. Mounting is done comfortably from above. The rails can also be extended with connectors as needed. Our mounting system for seamed metal roofs provides excellent rear ventilation of the modules and – with decent system components and homogenous module fields – attractive aesthetics.

Your benefits

- Only a handful of components – entirely pre-assembled
- Quick mounting from above
- The C-rail also acts as a cable channel
- Only three clamps for all frame heights
- Secure, stable and durable
- For all conventional seamed metal and profile sheet roofs
- Also suitable for standing seam roofs made of copper
- Excellent rear ventilation
- Simple, Eurocode-compliant layout with our Solar-Planit online tool



Clamp with saddle for copper standing seam roofs



C-rail connection directly on the seam clamp



Flush closure end clamp with C-rail

Clamping system



Middle clamp or
end clamp



Item no. 03-000276



Item no. 03-000284



Item no. 03-000275



Item no. 03-
000277

Attachment system

Connector



Item no. 03-000925

Rail



Item no. 03-001369

Seam clamp



Item no. 03-000219

VA saddle
(only for copper roofs)



Item no. 03-000338



Type Approved
Regular
Production
Surveillance
www.tuv.com
ID 1111212187



BayWa r.e. Solar Energy Systems GmbH | Eisenbahnstraße 150 | D-72072 Tübingen
Phone +49 7071 98987-0, Fax +49 7071 98987-10, solarenergysystems@baywa-re.com
www.baywa-re.com, solar-distribution.baywa-re.de, novotegra.baywa-re.com

Have you already seen it?

To our novotegra YouTube channel.
There you will find helpful videos for
installation assistance.

