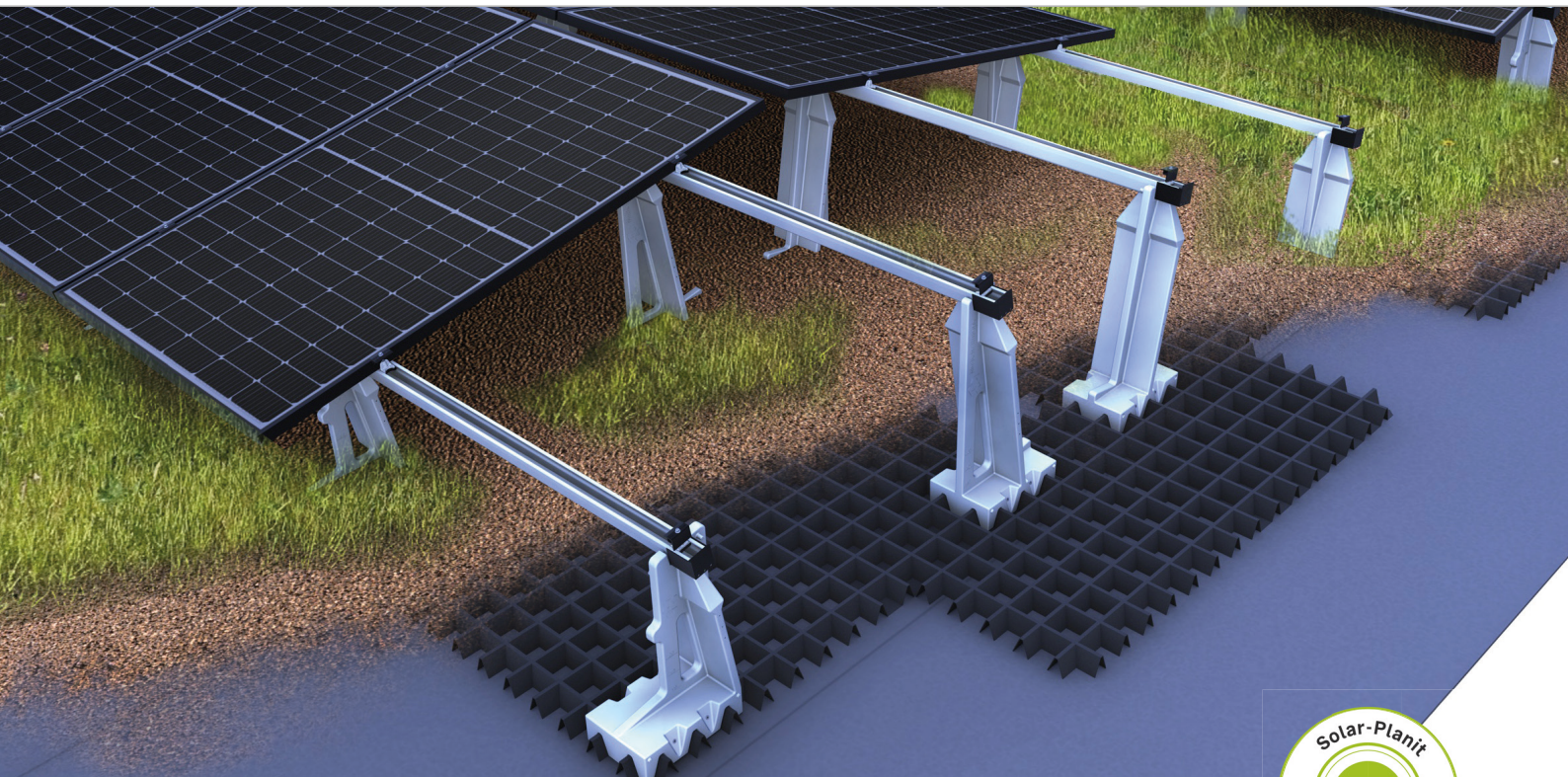
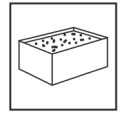


Green roof | East-west system

Clamping system with modules installed in portrait



Biotope, water storage, air conditioning – the all-in-one package for your roof!

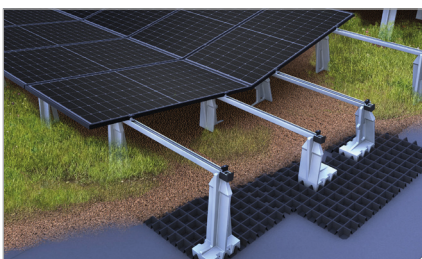
- Suitable for a wide range of green roofs
- Retention effect: Time-delayed water run-off relieves the sewage system – especially during heavy rainfall
- Natural cooling of the ambient temperature and the PV system
- Sustainable production made in Germany from recycled plastic

Product variants

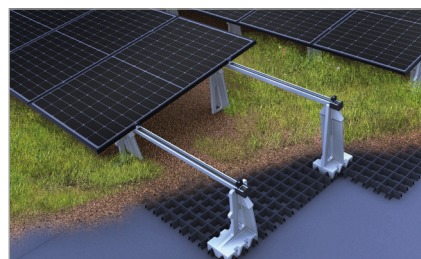
- Different layouts possible with the same components: east-west, butterfly, south-facing
- Only two clamps for all frame heights in blank and black anodized
- Many optional components for the perfect system: top cover C-rail, grounding connector, contact latch, optimiser fastening, etc.

YOUR BENEFITS

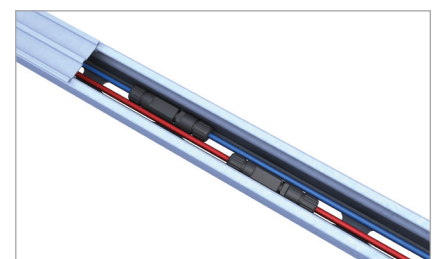
- Efficient use of space thanks to 10° module inclination and portrait installation
- Large substrate plates to offer sufficient space for ballasting
- Wind-tunnel-tested aerodynamics
- Sufficient distance from the roof surface for plant growth and sliding snow
- Interconnected panels for quick and easy assembly



Butterfly variant

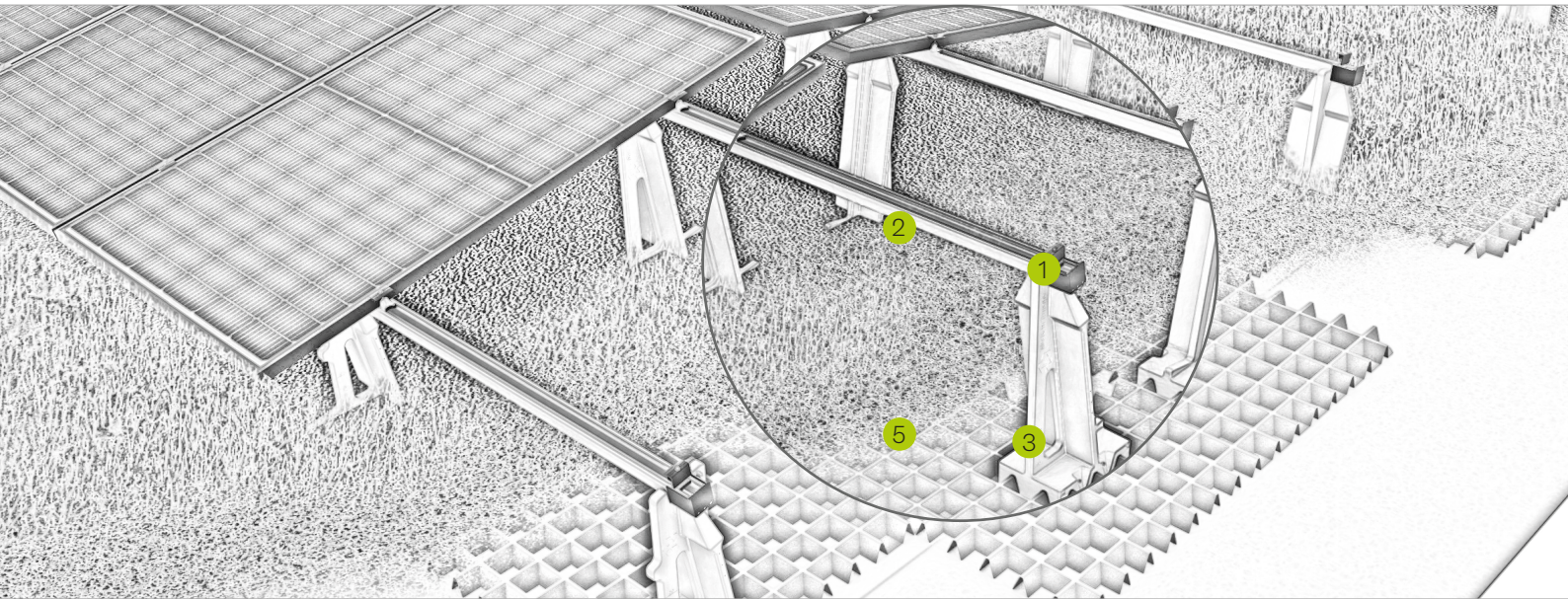


South-facing variant



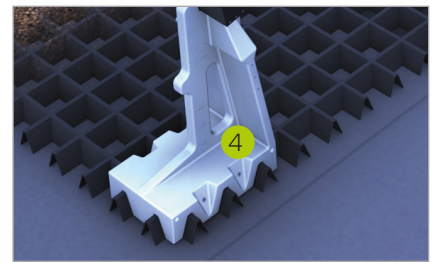
C-rail also acts as a cable channel

Green Roof | East-west system

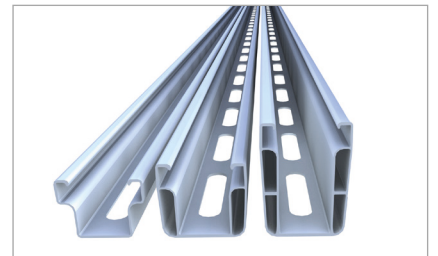


Pic Designation

- 1 **Middle and end clamp**
 - for frame heights of 30-42 mm and 43-52 mm
 - installation-friendly thanks to click-in mechanism
- 2 **C-rail**
 - Also acts as a cable channel
 - available in different strength and lengths
- 3 **Module support**
 - Positive fit with the substrate plate for excellent stability
 - With practical carrying handle and substrate height display
- 4 **Mounting screw**
 - Fast and secure connection of the green roof components
- 5 **Substrate plate**
 - Plenty of substrate space for ballasting
 - Water storage volume supports the retention effect



Positive fit of substrate plate and support



Rail connector C47 S for profile clamps

Mounting tutorial

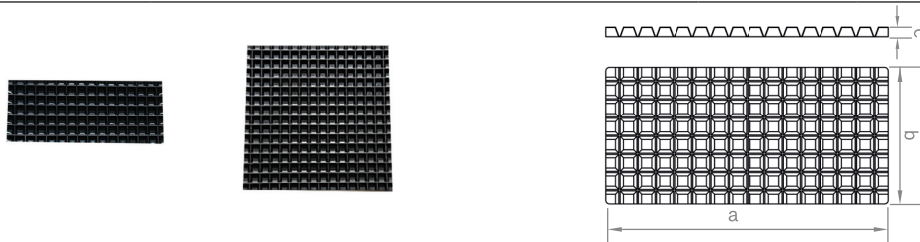


novotegra GmbH
Eisenbahnstraße 150 | 72072 Tübingen | Deutschland
Tel. +49 7071 98987-0, info@novotegra.com
www.novotegra.com

Subject to change without notice.
Last update: February 2023 / TP

Green roof: Single items

Substrate plate green roof



For the application of substrate for ballasting. Honeycomb structure in 10 cm grid for flexible positioning of supports. Made in Germany from recycled, UV-resistant plastic.

Item no.	Designation	a in mm	b in mm	c in mm	Material
03-001507	Substrate plate green roof	1550	1550	52	Plastic
03-001508	Substrate plate 1/2 green roof	1550	750	52	Plastic

Module support green roof



High stability thanks to form closure with the substrate plate. With practical carrying handle and display for substrate height.

Item no.	Designation	a in mm	b in mm	c in mm	Material
03-001578	Module support high M12	625	300	200	Plastic / A2SS
03-001579	Module support low M12	462	300	200	Plastic / A2SS

Module support mounting screw green roof

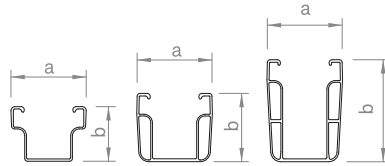
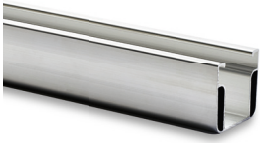


Countersunk screw with Torx 25 drive for connecting substrate plate and module support.

Item no.	Designation	a in mm	b in mm	c in mm	Material
03-001493	Module support mounting screw 6x80 green roof	80	6		St. galv.

Green roof: Single items

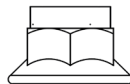
C-rails



Mounting rail with cable channel, for use as a module support rail in clamping systems or as a cross rail, available in different dimensions for various spans and loads depending on structural requirements. Rail bottom with slots 75 x 15 mm in 100 mm grid for easy fixing from above, available in blank or black anodised variations.

Item no.	Designation	a in mm	b in mm	c in mm	Material
03-001362	C-rail 38-1,6 2.20m	52	38		Alu
03-001364	C-rail 38-1,6 5.40m	52	38		Alu
03-001441	C-rail 47-2 2.40m	52	47		Alu
03-001366	C-rail 47-2 2.20m	52	47		Alu
03-001368	C-rail 47-2 4.30m	52	47		Alu
03-001369	C-rail 47-2 5.40m	52	47		Alu
03-001371	C-rail 71-2 5.40 m	52	71		Alu
03-001363	C-rail 38-1,6 2.20m black	52	38		Alu
03-001365	C-rail 38-1,6 5.40m black	52	38		Alu
03-001367	C-rail 47-2 2.20m black	52	47		Alu
03-001370	C-rail 47-2 5.40m black	52	47		Alu

Serrated self-locking flange nut M12

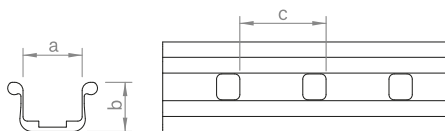


Serrated self-locking flange nut M12, AF 18 for connection of the C-rail to the module supports green roof.

Art.-Nr.	Bezeichnung	a in mm	b in mm	c in mm	Material
03-001280	Serrated self-locking flange nut M12				A2SS

Green roof: Single items

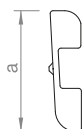
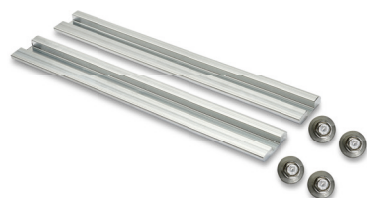
Rail connector C-rail 38



Connector C-rail 38, l = 325 mm, with two round-head screws and locking nuts with 18 AF hexagon drive, available as expansion joint construction with four round-head screws. Alternative packing units see p. 87.

Item no.	Designation	a in mm	b in mm	c in mm	Material
03-001105	Rail connector set C38	35	28.5	50	Alu / A2SS
03-001106	Expansion joint C38	35	28.5	50	Alu / A2SS

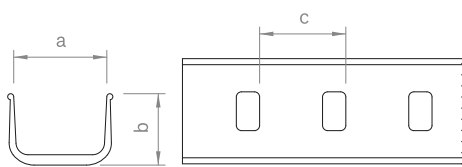
Rail connector C-rail 47 profile chambers



Connector C-rail 47, l = 200 mm, screw connection with four self-drilling screws with 8 AF hexagon drive. Alternative packing units see p. 87.

Item no.	Designation	a in mm	b in mm	c in mm	Material
03-000925	Rail connector set C47 S	30			Alu / A2SS

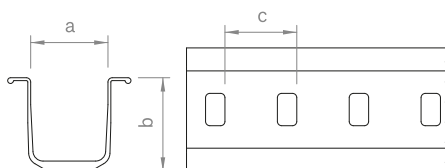
Rail connector C-rail 47



Connector C-rail 47, l = 325 mm, with two round-head screws and locking nuts with 18 AF hexagon drive, available as expansion joint construction with four round-head screws. Alternative packing units see p. 87.

Item no.	Designation	a in mm	b in mm	c in mm	Material
03-000001	Rail connector set C47	52	40	50	Alu / A2SS
03-000138	Expansion joint C47	52	40	50	Alu / A2SS

Rail connector C-rail 71

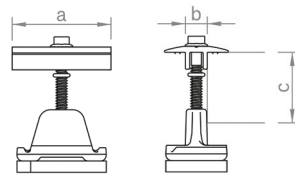


Connector C-rail 71, l = 490 mm, with four round-head screws, washers and locking nuts with 18 AF hexagon drive, available as expansion joint construction. Alternative packing units see p. 87.

Item no.	Designation	a in mm	b in mm	c in mm	Material
03-000151	Rail connector set C71	52	67	50	Alu / V2A
03-000265	Expansion joint C71	52	67	50	Alu / V2A

Green roof: Single items

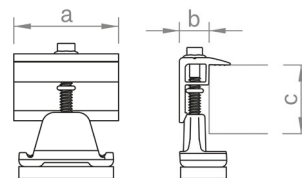
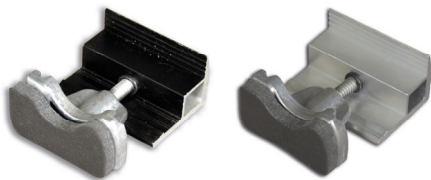
Middle clamps for C-rail, C-N-rail und green roof module support rail



Middle clamp for fixing the modules to the C-rail, C-N-rail or green roof module support rail. Installation-friendly thanks to click-in mechanism. Clamping screw with 8 AF hexagon drive. For frame heights of 30– 42 mm or 43 – 52 mm, available in blank or black anodised variations.

Item no.	Designation	a in mm	b in mm	c in mm	Material
03-001345	Middle clamp 30-42 Set C	52	11,4	30–42	Alu / A2SS / PE
03-000285	Middle clamp 43-52 Set C	52	11,4	43–52	Alu / A2SS / PE
03-001346	Middle clamp 30-42 Set C black	52	11,4	30–42	Alu / A2SS / PE
03-000286	Middle clamp 43-52 Set C black	52	11,4	43–52	Alu / A2SS / PE

End clamps for C-rail, C-N-rail und green roof module support rail



End clamp for fixing the modules to the C-rail, C-N-rail or green roof module support rail. Installation-friendly thanks to click-in mechanism. Clamping screw with 8 AF hexagon drive. For frame heights of 30– 42 mm or 43 – 52 mm, available in blank or black anodised variations.

Item no.	Designation	a in mm	b in mm	c in mm	Material
03-001236	End clamp 30-42 Set C	52	14	30–42	Alu / A2SS / PE
03-000287	End clamp 43-52 Set C	52	14	43–52	Alu / A2SS / PE
03-001237	End clamp 30-42 Set C sw	52	14	30–42	Alu / A2SS / PE
03-000288	End clamp 43-52 Set C sw	52	14	43–52	Alu / A2SS / PE