



# novotegra

## Mounting solutions Tile roof



## Mounting solution for tile roofs



- Self-engineered mounting system, established on the market since 2006
- Easy and completely free of charge planning via online tool Solar-Planit
- Solutions for almost all roof tile types
- Free first-time installation support
- Quick mounting thanks to pre-assembled parts
- Approvals by building authorities, TÜV and DEKRA certified quality, CE marking
- Static calculation according to Eurocode and SIA norms
- 12 year product warranty

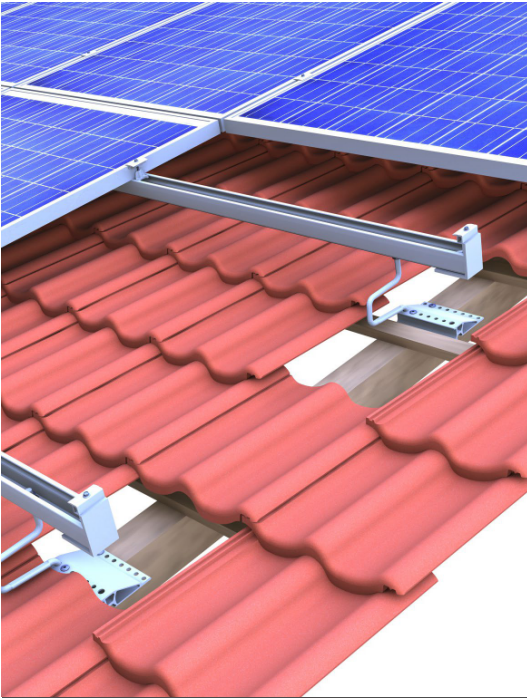






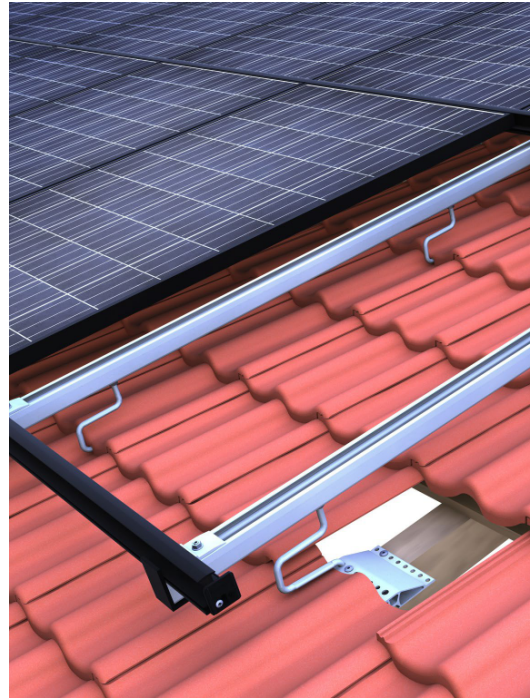
## Variations mounting solutions tile roof

top-fix clamping system



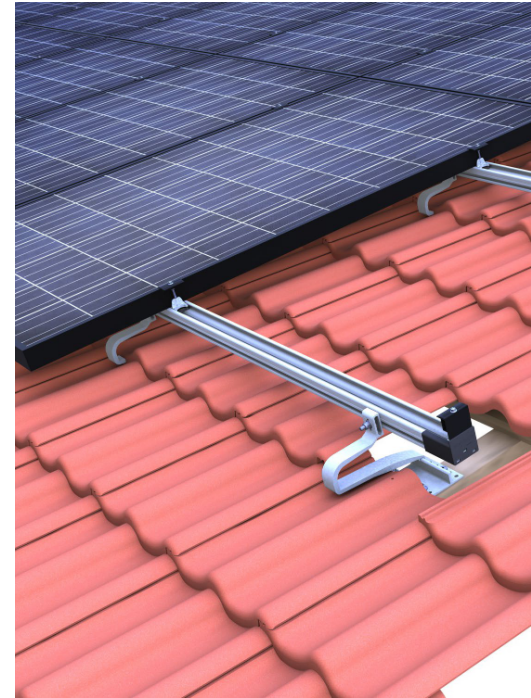
ZD 30 with C-rail 47

top-fix insertion system



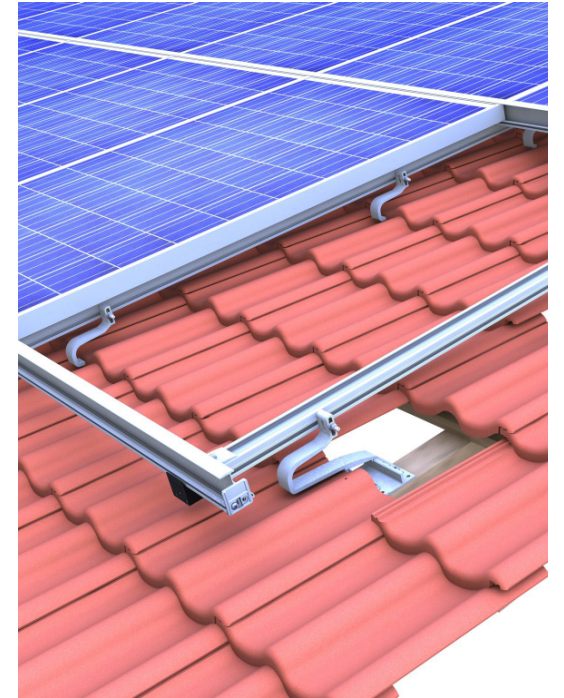
ZD 30 with C-rail 47 as vertical rail and insertion rail

side-fix clamping system



ZD 30 N35 horizontal with C-N-rail 37

side-fix insertion system



ZD 30 N35 vertical with C-N-rail 37 as vertical rail and insertion rail



# novotegra top-fix roof hook

## Your benefits:

- Three-way adjustable roof hook  
→ Screw connection at the rail bottom allows precise adjustment of the lower rail layer
- Centric load distribution thanks to innovative geometry
- Narrow and elegant tile gap, only minimal tile manipulation necessary
- Roof hook does not touch the tile, no danger of tile damage
- Various roof hooks for low and high load situations – light roof hooks for narrow rafters, double roof hooks for high snow loads
- Big cantilever of the bottom plate on the rafter possible without additional reinforcement
- Quick mounting from above with easily graspable components



Insertion system



Clamping system

## Unique component: novotegra top-fix roof hook with round steel

	ZD	ZD double	flex	flex double	BS	BS double
Clay tile	✓	✓	✓	✓		
Concrete tile	✓	✓	✓	✓		
Beavertail tile			✓	✓	✓	✓
Horizontal rail	✓	✓	✓	✓	✓	✓
Vertical rail	✓		✓		✓	
Load capacity						
Adjustability	3-way		3-way		3-way	
Cost	€€	€€€	€	€€	€€	€€€



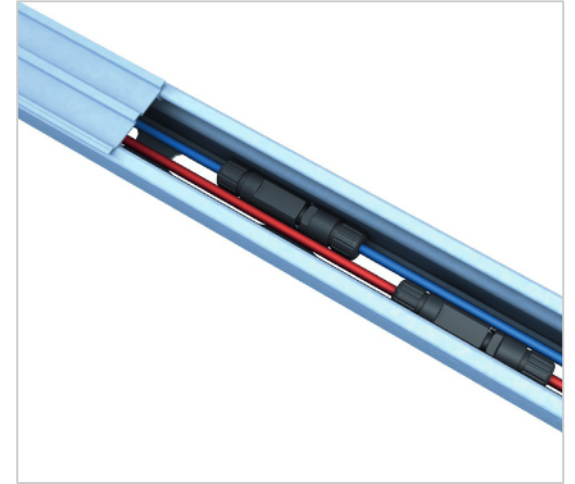
## The C-rail – more than just a module support rail

Our C-rail is unique: for each and every application it is available in the right strength and length.

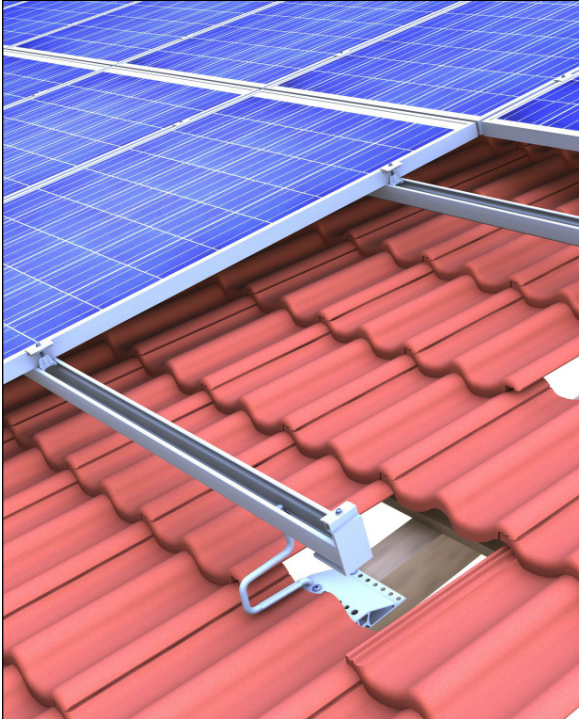
Therefore it is usable across all novotegra pitched roof systems.

### Your benefits at a glance:

- C-rail also acts as a cable channel – tidy without loose cables, enough space for plugs
- The optional cover protects the cables against damage from UV radiation, animals and humidity
- Quick mounting from above with long holes for optimum alignment flexibility
- Big cantilever possible
- Can be stepped on throughout installation (from C47 upwards)
- Rails in blank aluminium or black anodized
- Unique components, usable across systems
- Installation-friendly clamps with a click-in mechanism for all frame heights in blank aluminium or black anodized
- Insertion rails in the most popular frame heights in blank aluminium or black anodized can be connected



## top-fix clamping system with C-rail 47 | Details



- Three-way adjustable roof hook
- Centric load distribution thanks to innovative geometry
- Narrow and elegant tile gap, only minimal tile manipulation necessary
- Roof hook does not touch the tile, no danger of tile damage



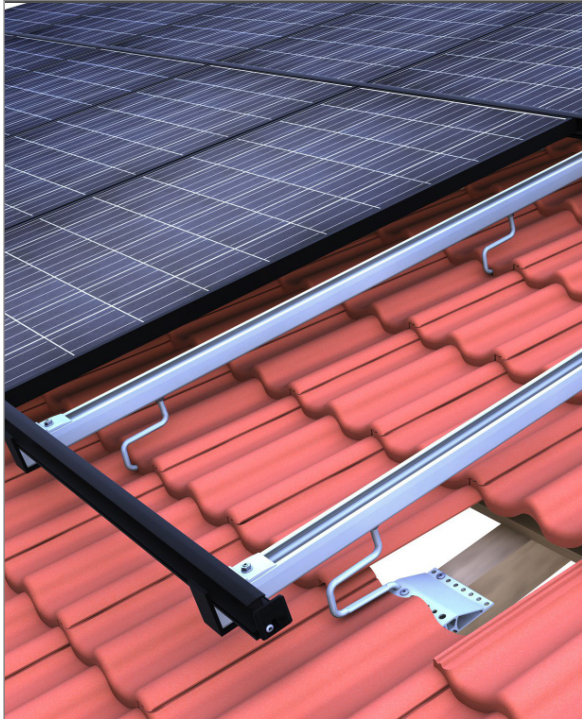
- C-rail usable across systems – available in blank aluminium or black anodized
- Can be stepped on throughout installation (from C47 upwards)
- C-rail also acts as a cable channel



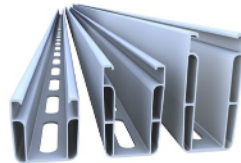
- Middle and end clamps in blank and black anodized
- Installation-friendly thanks to click-in mechanism
- No falling out or slipping thanks to PE pad underneath the rail nut



## top-fix insertion system with C-rail 47 | Details



- Three-way adjustable roof hook
- Centric load distribution thanks to innovative geometry
- Narrow and elegant tile gap, only minimal tile manipulation necessary
- Roof hook does not touch the tile, no danger of tile damage



- C-rail usable across systems – available in blank aluminium or black anodized
- Can be stepped on throughout installation (from C47 upwards)
- C-rail also acts as a cable channel



- Insertion rails in blank and black anodized for frame heights 30-50 mm
- Tension-free mounting as well as attractive and unmistakable appearance for module portrait and landscape installation
- Quick mounting, module- and maintenance-friendly

# novotegra side-fix

## Your benefits:

- Quick roof hook installation through click technology (ZD 30 N35)
- Die-cast aluminium roof hooks without welding seam (ZD 533 / ZD 544)
- Easy to assemble connection from the side
- Installation-friendly clamps with a click-in mechanism
- Only two clamps for all frame heights
- Height-adjustable rail connection
- Low substructure clearance to the roof coverage
- Module installation floating and tension-free (Insertion system)
- Insertion rails in blank aluminium or black anodized

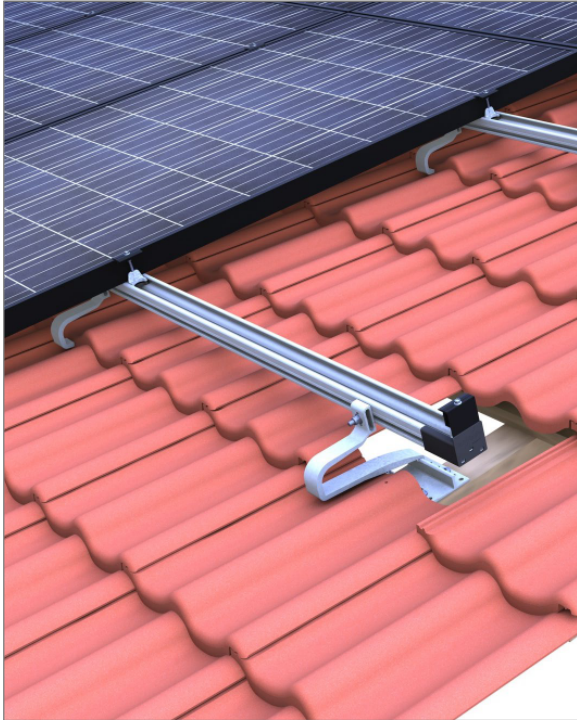




## novotegra side-fix roof hooks - overview

	ZD 30 N35	544	533	633
Clay tile	✓	✓	✓	✓
Concrete tile	✓	✓	✓	✓
Beavertail tile				
Horizontal rail	✓	✓		
Vertical rail	✓		✓	✓
Load capacity	💪💪	💪	💪	💪
Adjustability	2-way			3-way
Cost	€	€€	€€	€€€

## side-fix clamping system with C-N-rail | Details



- Quick roof hook installation through click technology
- For large tile overlap up to approx. 11 cm
- Same roof hook for vertical as well as horizontal connection of the C-N-rail or N-rail
- Easy to assemble connection from the side



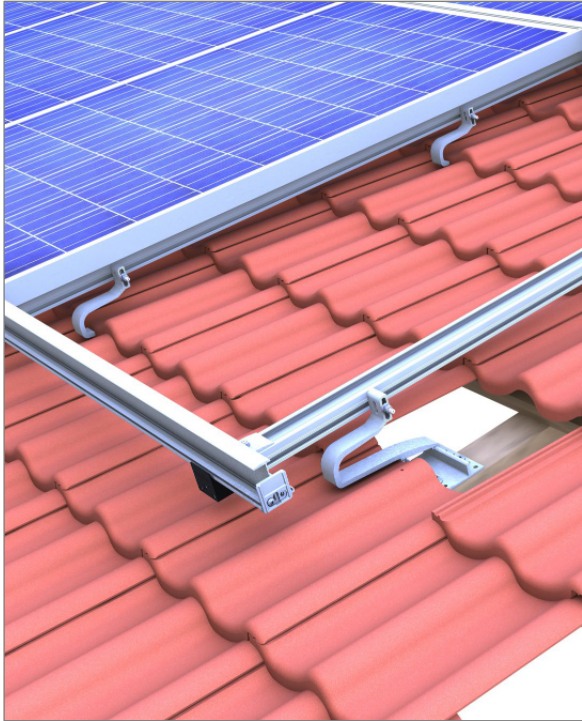
- Rail in blank and black anodized
- Can be used as a module support rail or as a cross rail
- With cable channel and groove



- Middle and end clamps in blank and black anodized
- Installation-friendly thanks to click-in mechanism
- No falling out or slipping thanks to PE pad underneath the rail nut



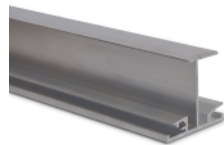
## side-fix insertion system with C-N-rail or N-rail | Details



- Quick roof hook installation through click technology
- For large tile overlap up to approx. 11 cm
- Same roof hook for vertical as well as horizontal connection of the C-N-rail or N-rail
- Easy to assemble connection from the side



- Rail in blank and black anodized
- Can be used as a module support rail or as a cross rail
- With cable channel and groove



- Insertion rails in blank and black anodized for frame heights 30-50 mm
- Tension-free mounting as well as attractive and unmistakable appearance for module portrait and landscape installation
- Quick mounting, module- and maintenance-friendly

## More components



### **Roof hook mounting screws**

Available in diameter 6mm and 8mm in different lengths. Can be used for various roof hooks.



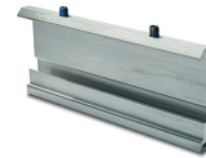
### **Rail connector set C47**

Rail connector set to extend C-rails, also available as expansion joint construction with four round-head screws.



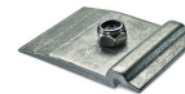
### **Rail connector set C47 S**

Rail connector set to extend the C-rail 47 internally over the profile chambers.



### **Rail connector set IR**

Connector insertion rail for framed modules, available in blank or black anodized variations.



### **Cross rail connector set N IR M8**

Connector for fixing insertion rails on N-rails, completely pre-assembled.



### **Rail connector set C-N 37 S**

Internal connector for maximum assembly freedom.

## More components



### End caps C-rail black

End caps in black for optically tidy rail ends. UV and weather resistant.



### Slip guard/ End cap set C-rail

Slip guard for fixing modules mounted in landscape or as an end cap for the C-rail, available in blank or black anodized.



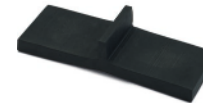
### End cap C-N 37 black

End cap in black for optically tidy rail ends. UV and weather resistant.



### Edge stop set IR

Edge stop for insertion rails, available in blank or black anodized.



### EPDM-T protection IR

EPDM T protection for fixing modules in insertion rails with minimal module slope  $< 10^\circ$ .



### Grounding connector set AF 18

Grounding connector set sufficient for clamping cables of 6-16 mm<sup>2</sup> or wire with diameter 6-10mm.



## More components



### Mounting Set C-Rail M8

Connector set for fixing parts as optimizers to the C-rail.

optional



### Contact latch module clamp

Contact latch for equipotential bonding / lightning current carrying capacity between module frame and mounting system. Suitable for all middle clamps C-rail.

optional

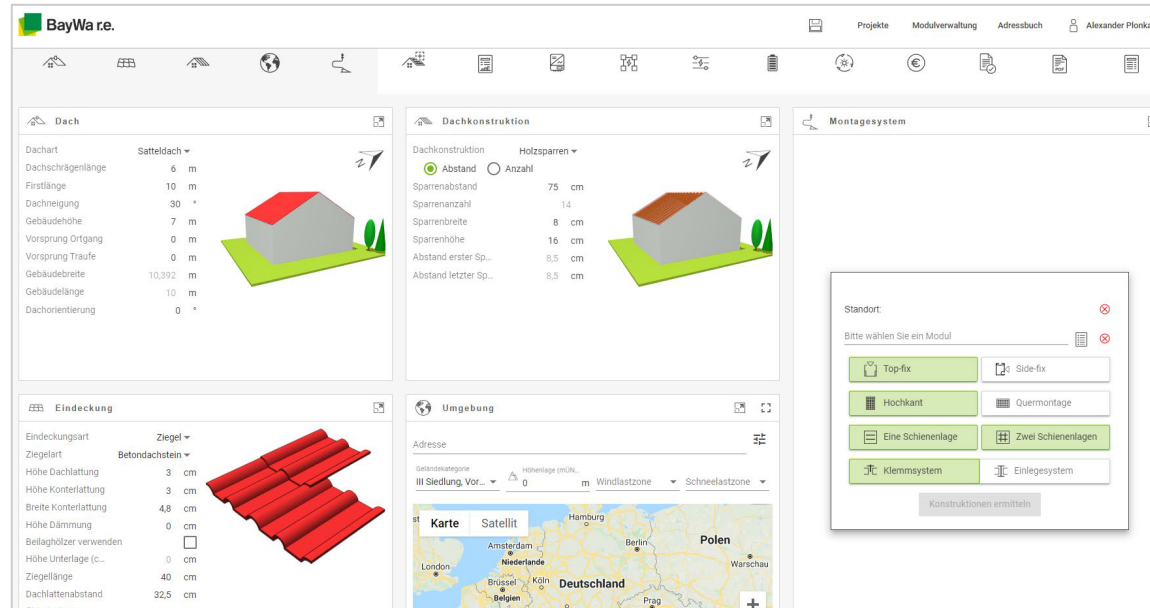


### Top cover C-rail

Cover to clip on to the C-rail if using as cable channel. Protects the cables against damage from UV radiation, animals and humidity.

optional

# Our free planning tool Solar-Planit



## Our Solar-Planit

- Complete system planning
  - Mounting system design & static calculation
  - Module configuration
  - Inverter design & suitable storage
  - Yield & profitability
  - System documentation
- System planning in a few minutes thanks to intuitive operation
- Free and webbased incl. free webinars
- Transmission to our webshop
- Availability can already be taken into account during planning

Use our [Solar-Planit!](#)

## Our free first-time installation support

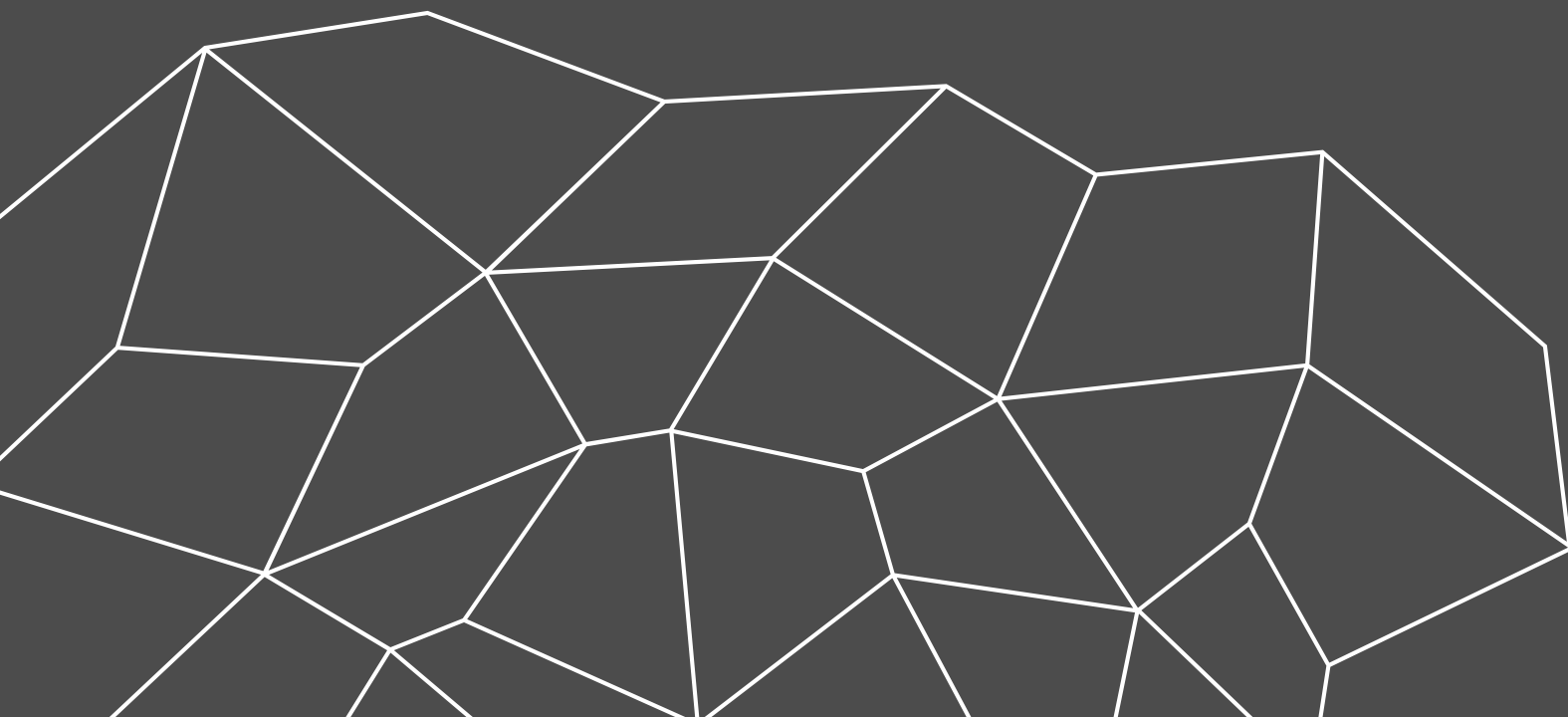


### Our first-time installation support

- Support and instruction by a technical consultant during installation
- Instruction and support around the mounting system
- Discussion of the results of the static calculation
- Tips & tricks around novotegra
- For free!

*For more information, please visit our [Website](#) or contact your personal representative!*





# Thank you!

**novotegra GmbH**

[info@novotegra.com](mailto:info@novotegra.com)

# Copyright

© Copyright novotegra GmbH, 2021

The content of this presentation (including text, graphics, photos, tables, logos, etc.) and the presentation itself are protected by copyright.  
They were created by novotegra GmbH independently.

Any dissemination of the presentation and/or content or parts thereof is only permitted with written permission by novotegra without written permission of novotegra, this document and/or parts of it must not be passed on, modified, published, translated or reproduced, either by photocopies, or by others – in particular by electronic procedures. This reservation also extends to inclusion in or evaluation by databases. Infringements will be prosecuted.