



# novotegra

## Mounting solution Corrugated and sandwich roof



## Mounting solution for corrugated and sandwich roof

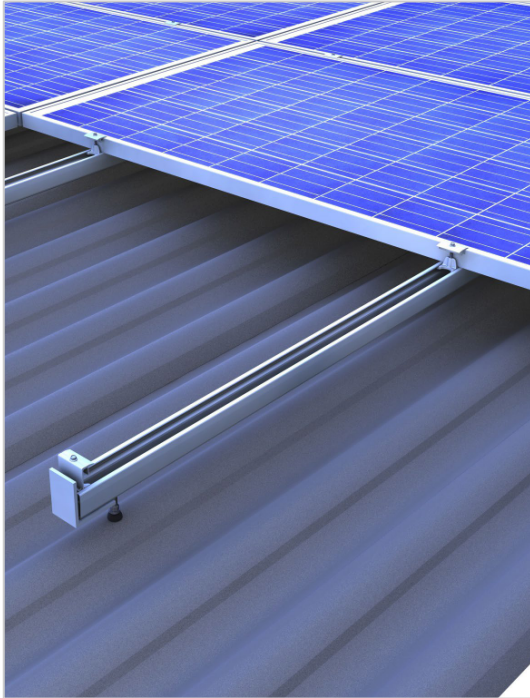


- Self-engineered mounting system, established on the market since 2006
- Easy and completely free of charge planning via online tool Solar-Planit
- Free first-time installation support
- Quick mounting thanks to pre-assembled parts
- Approvals by building authorities, TÜV and DEKRA certified quality, CE marking
- Static calculation according to Eurocode and SIA norms
- 12 year product warranty

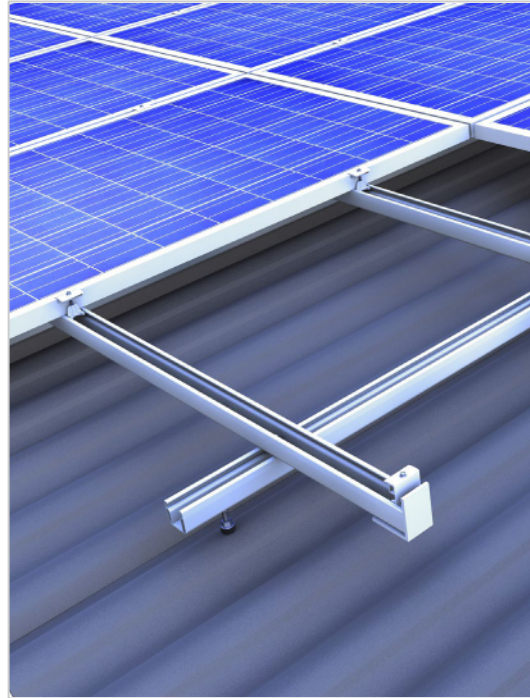


## Variations mounting solutions for corrugated and sandwich roof

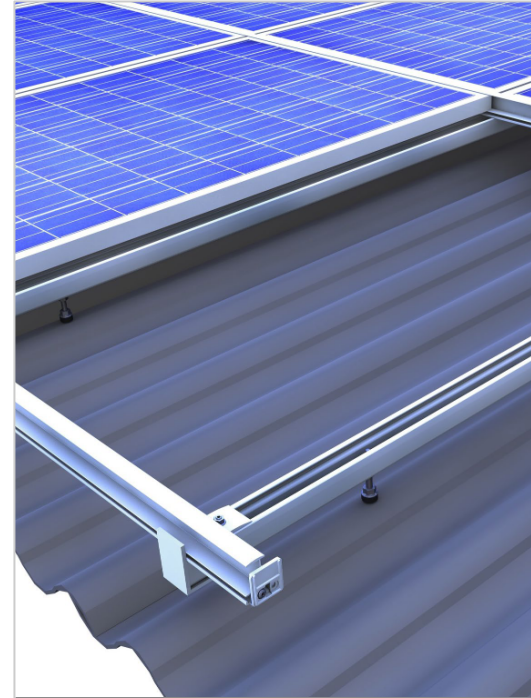
Clamping system  
Modules in landscape



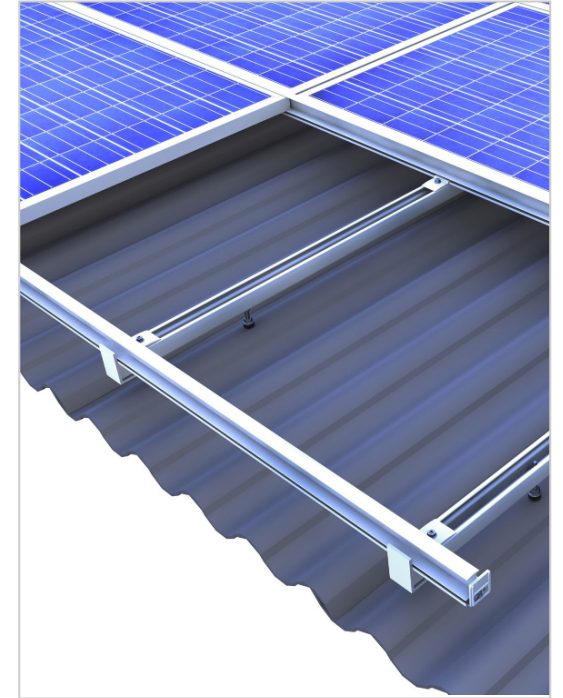
Clamping system  
Cross-rail modules in  
landscape



Insertion system  
Modules in portrait



Insertion system  
Cross-rail modules in  
landscape



# novotegra top-fix

## Your benefits:

- Mounting modules in portrait or landscape
- Installation-friendly clamps with a click-in mechanism for all frame heights in blank aluminium or black anodized
- high-end installation aesthetics and excellent module rear ventilation
- Centric load distribution
- Quick mounting from above with easily graspable components, usable across systems
- High flexibility trough big cantilever
- C-rail also acts as a cable channel – tidy without loose cables, enough space for plugs, can be stepped on throughout installation
- Module installation floating and tension-free (Insertion system)

*For further benefits, mounting videos and installation manuals please visit [YouTube](#) or our [Website](#).*



Clamping system



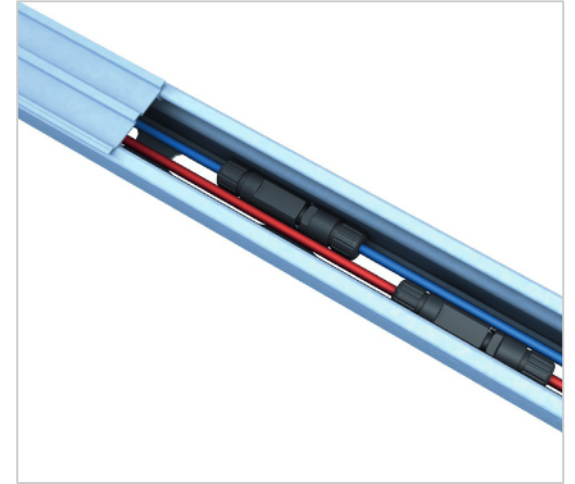
## The C-rail – more than just a module support rail

Our C-rail is unique: for each and every application it is available in the right strength and length, usable across all novotegra pitched roof systems.

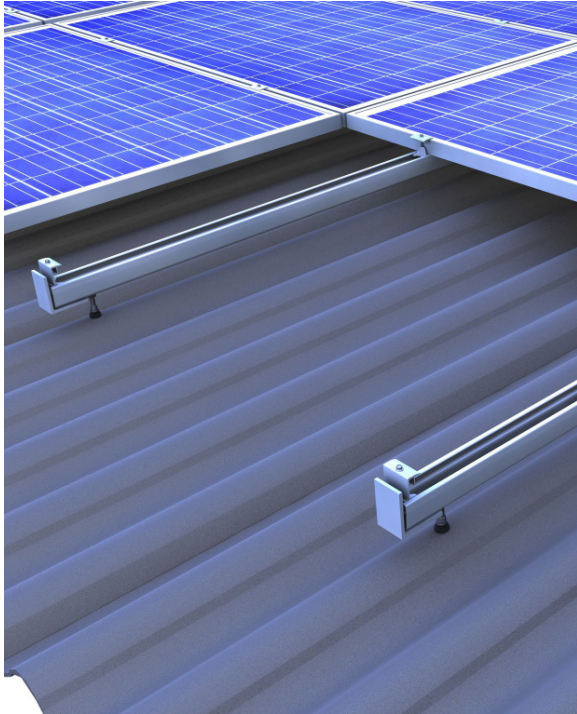
For trapezoidal metal roofs the C-rail is available as a „normal“ rail as well as in short rail versions.

### Your benefits at a glance:

- C-rail also acts as a cable channel – tidy without loose cables, enough space for plugs
- The optional cover protects the cables against damage from UV radiation, animals and humidity
- Quick mounting from above with elongated holes for optimum alignment flexibility
- Large cantilever possible
- Can be stepped on throughout installation (from C47 upwards)
- Rails in blank Aluminium or black anodized
- Unique components, usable across systems
- Installation-friendly clamps with a click-in mechanism for all frame heights in blank Aluminium or black anodized
- Insertion rails in the most popular frame heights in blank Aluminium or black anodized



## Clamping system with C-rail 47 | Details



- Middle and end clamps in blank and black anodized
- Installation-friendly thanks to click-in mechanism
- No falling out or slipping thanks to PE pad underneath the rail nut

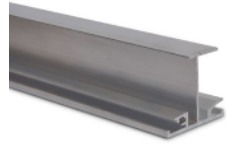
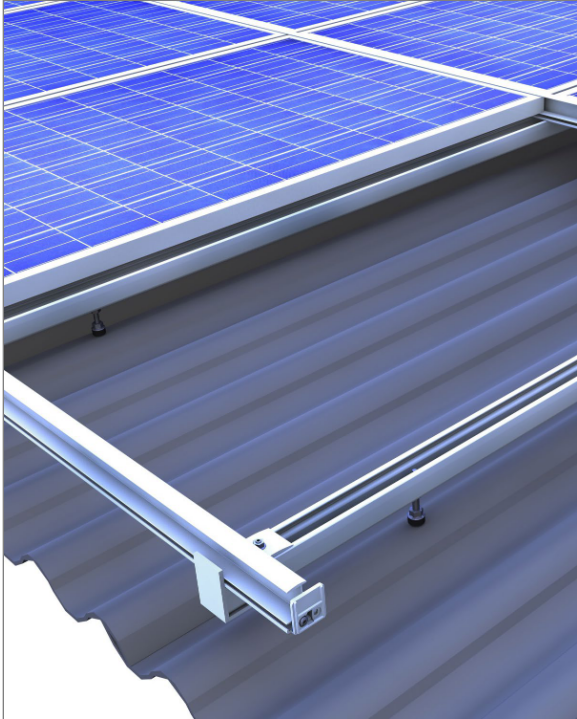


- C-rail usable across systems – available in blank aluminium or black anodized
- Can be stepped on throughout installation (from C47 upwards)
- C-rail also acts as a cable channel

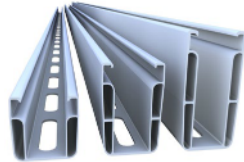


- high load capacity due to centric load distribution
- Easy connection to the C-rail
- Available in different lengths: 200-300 mm

## Insertion system with C-rail 47 and insertion rail | Details



- Insertion rails in blank and black anodized for frame heights 30-50 mm in different lengths
- Tension-free mounting as well as attractive and unmistakable appearance for module portrait and landscape installation
- Quick mounting, module- and maintenance-friendly



- C-rail usable across systems – available in blank aluminium or black anodized
- Can be stepped on throughout installation (from C47 upwards)
- C-rail also acts as a cable channel



- high load capacity due to centric load distribution
- Easy connection to the C-rail
- Available in different lengths: 200-300 mm



## More components



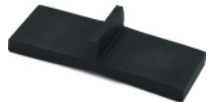
### Edge stop set IR

in blank or black anodized for optically tidy rail ends and to prevent modules from falling out



### Grounding connector set

Grounding connector set sufficient for clamping cables of 6-16 mm<sup>2</sup> or wire with diameter 6-10mm.



### EPDM-T protection IR

EPDM-T protection for fixing modules in insertion rails with minimal module slope < 10°.



### Contact latch module clamp

Contact latch for equipotential bonding / lightning current carrying capacity between module frame and mounting system.

optional



### Top cover C-rail

Cover to clip on to the C-rail if using as cable channel. Protects the cables against damage from UV radiation, animals and humidity.

optional

## More components



### **Rail connector set C47**

Rail connector set to extend C-rails, also available as expansion joint construction with four round-head screws.



### **Rail connector set IR**

Connector insertion rail for framed modules, available in blank or black anodized variations.



### **Rail connector set C47 S**

Rail connector set to extend the C-rail 47 internally over the profile chambers



### **Cross rail connector set C IR M8**

Connector for fixing insertion rails on C-rails and short rails.



### **End caps C-rail black**

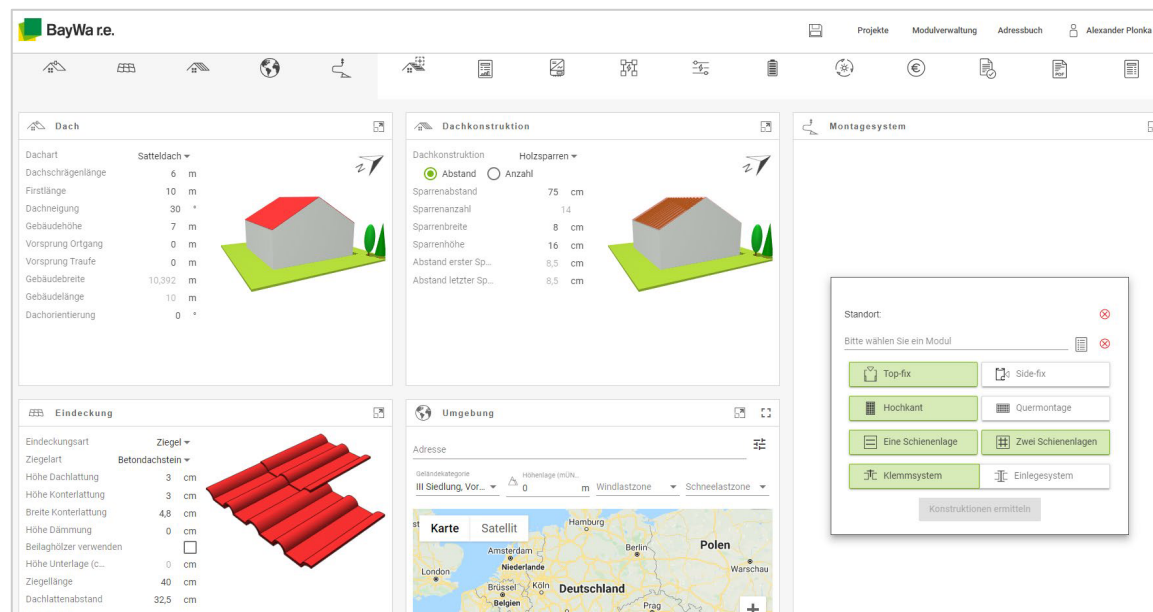
End caps in black for optically tidy rail ends. UV and weather resistant.



### **Slip guard/ End cap set C-rail**

Slip guard for fixing modules mounted in landscape or as an end cap for the C-rail, available in blank or black anodized.

# Our free planning tool Solar-Planit



## Our Solar-Planit

- Complete system planning
  - Mounting system design & static calculation
  - Module configuration
  - Inverter design & suitable storage
  - Yield & profitability
  - System documentation
- System planning in a few minutes thanks to intuitive operation
- Free and webbased incl. free webinars
- Transmission to our webshop
- Availability can already be taken into account during planning

Use our [Solar-Planit!](#)



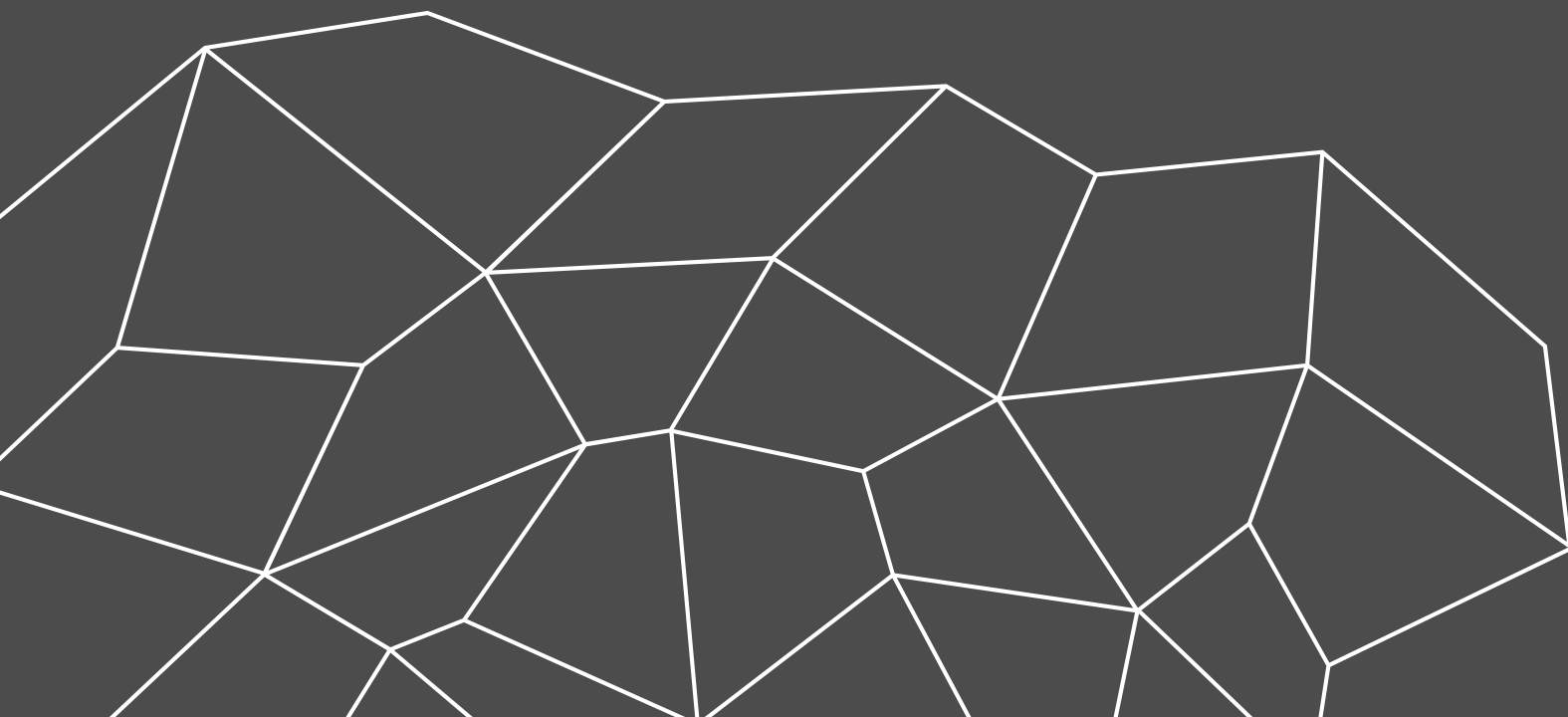
# Our free first-time installation support



## Our first-time installation support

- Support and instruction by a technical consultant during installation
- Instruction and support around the mounting system
- Discussion of the results of the static calculation
- Tips & tricks around Novotegra
- For free!

*For more information, please visit our [Website](#) or contact your personal representative!*



# Thank you!

**novotegra GmbH**

[info@novotegra.com](mailto:info@novotegra.com)

# Copyright

© Copyright novotegra GmbH, 2021

The content of this presentation (including text, graphics, photos, tables, logos, etc.) and the presentation itself are protected by copyright.  
They were created by novotegra GmbH independently.

Any dissemination of the presentation and/or content or parts thereof is only permitted with written permission by novotegra without written permission of novotegra, this document and/or parts of it must not be passed on, modified, published, translated or reproduced, either by photocopies, or by others – in particular by electronic procedures. This reservation also extends to inclusion in or evaluation by databases. Infringements will be prosecuted.