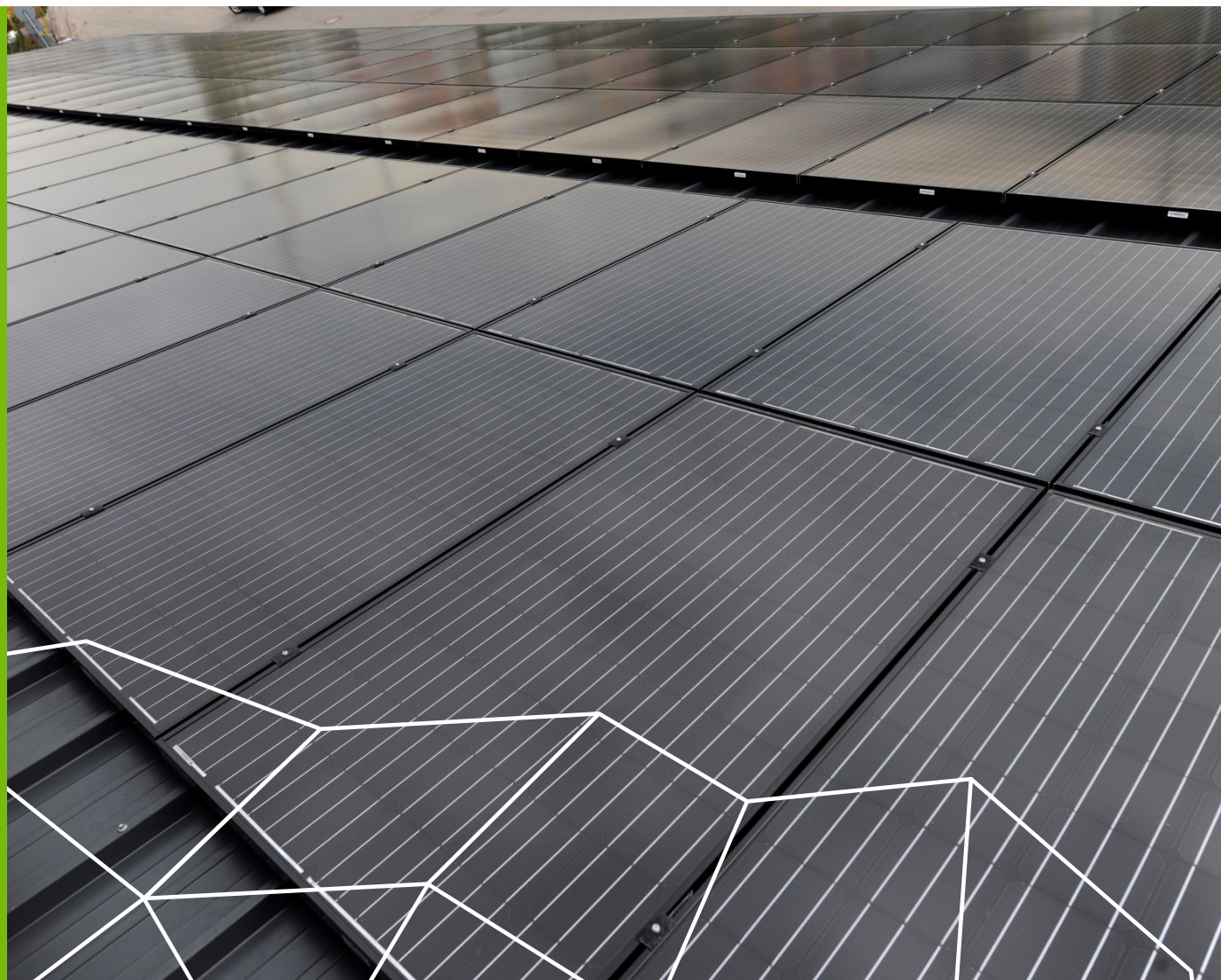




novotegra

Mounting solutions
Trapezoidal metal roof



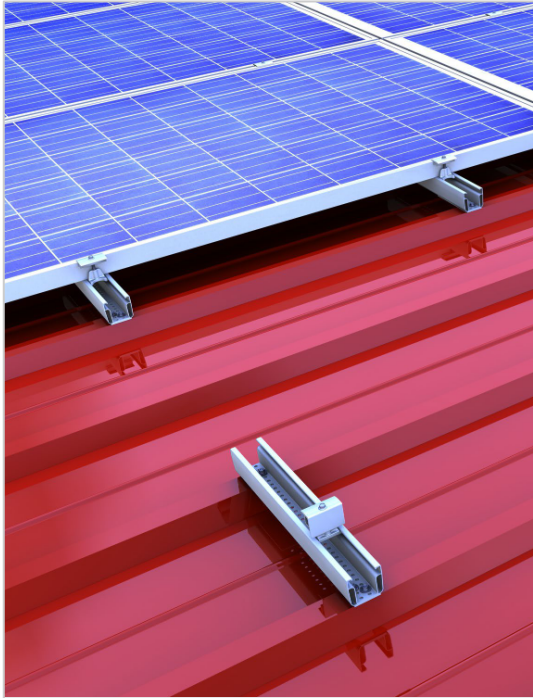
Mounting solution for trapezoidal roofs



- Self-engineered mounting system, established on the market since 2006
- Easy and completely free of charge planning via online tool Solar-Planit
- Free first-time installation support
- Quick mounting thanks to pre-assembled parts
- Approvals by building authorities, TÜV and DEKRA certified quality, CE marking
- Static calculation according to Eurocode and SIA norms
- 12 year product warranty

Variations mounting solutions trapezoidal metal roof

Clamping system
Modules portrait
Short rail



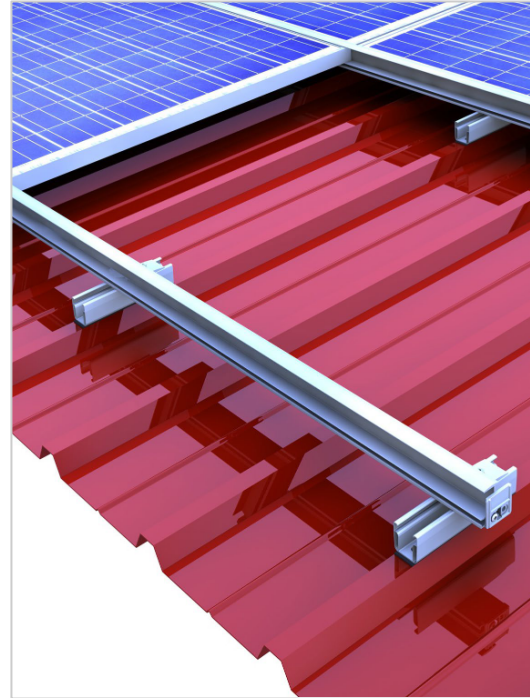
Short rail C47
L: 385mm

Clamping system
Modules landscape
Short rail



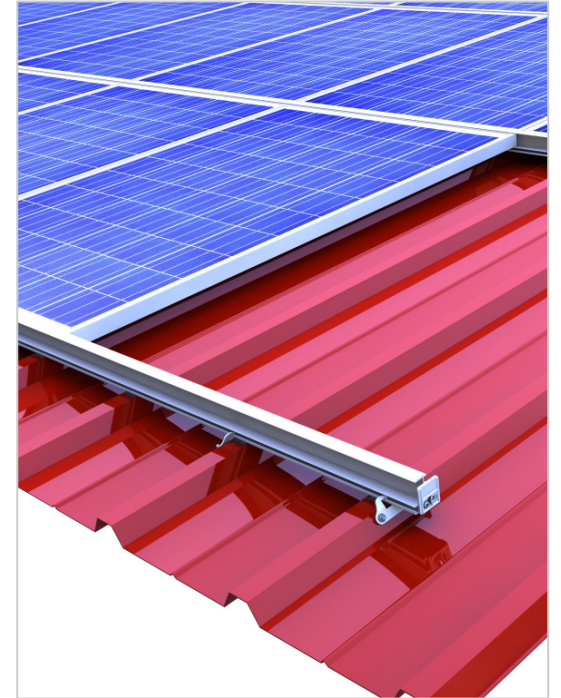
Short rail C47
L: 200mm

Insertion system
on short rail



Short rail C47
L: 200mm with IR

Insertion system
with trapezoidal bracket



Trapezoidal bracket with IR

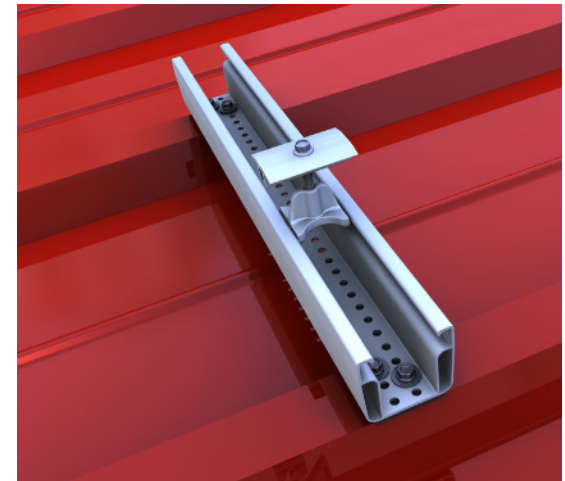
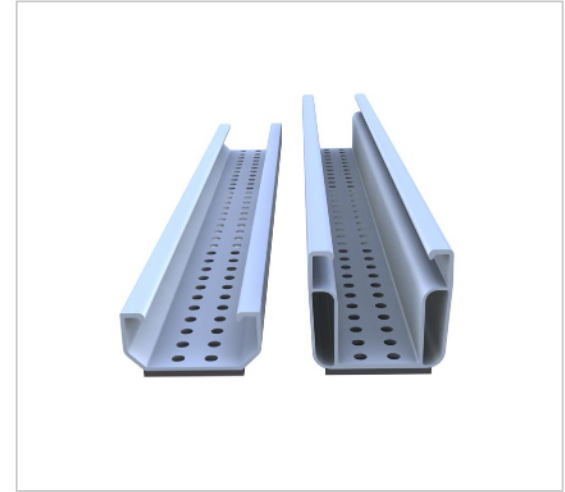
Clamping system – Modules portrait – Short rail / C-rail

With our short rail system for trapezoidal metal roofs, we always have the right solution: Whether our C24 for the yield-optimized installation or the project business or our C47 for excellent module rear ventilation with extra space to the roof covering.

Alternatively you might decide on the C-rail assembly. Then you'll get neat cable routing and a load-distributing connection to the trapezoidal sheet inclusively. In this system the C-rail is screwed onto several high beads after having placed EPDM sealant strips on them.

Your benefits:

- Fastening with building authority-approved thin sheet screws
- Available in two different profile heights (C24 | C47)
- Excellent module rear ventilation (C47)
- Quick mounting from above with easily graspable components
- C-rail pieces can be used as cable channel (C-rail assembly)
- Solution for roofs with low load reserve (C-rail assembly)
- Slip guard also serves as mounting aid for module installation



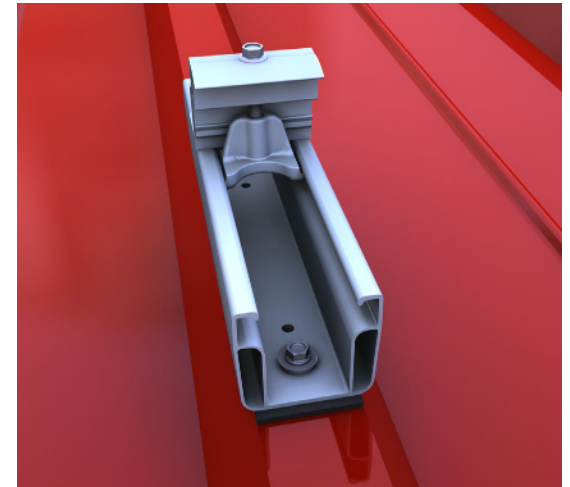
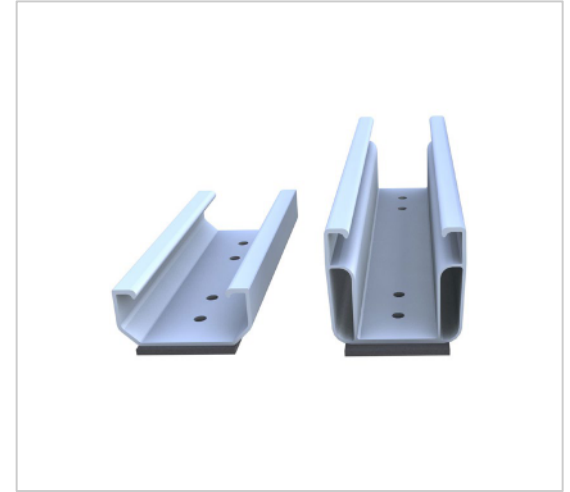
Clamping system – Modules landscape – Short rail

With our short rail system for trapezoidal metal roofs, we always have the right solution: Whether our C24 for the yield-optimized installation or the project business or our C47 for excellent module rear ventilation with extra space to the roof covering.

For module installation in landscape we need only very short short rails of 125 mm or 200 for clamping the modules. Less material means of course less material cost as well as low storage space requirement.

Your benefits :

- Fastening with building authority-approved thin sheet screws
- Available in two different profile heights (C24 | C47)
- Excellent module rear ventilation (C47)
- Quick mounting from above with easily graspable components
- Slip guard also serves as mounting aid for the lowest module row



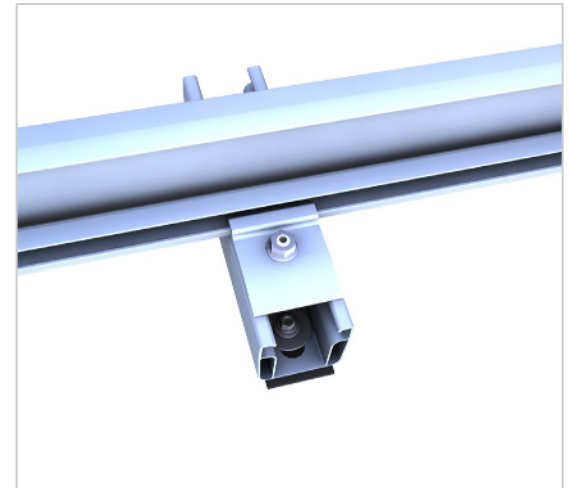
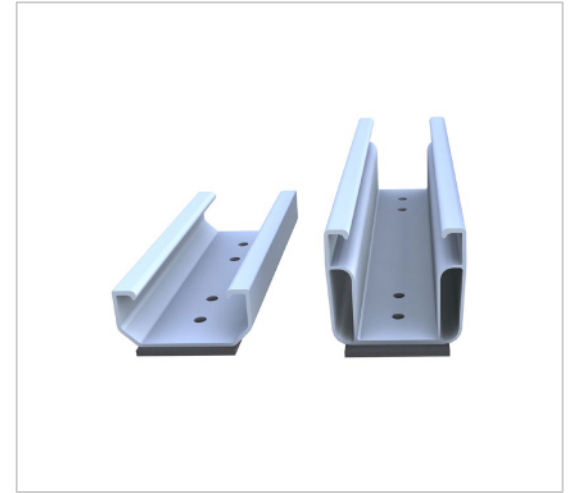
Insertion system on short rail

Good combination: Our short rails combined with our insertion rail. Also here the short rails are available in two different profile heights. The insertion rail is connected to the short rails via cross rail connector set.

Therefore you have an excellent module rear ventilation with extra space to the roof covering as well as an attractive and unmistakable appearance. And the best: you need only a handful of entirely pre-assembled components.

Your benefits:

- Fastening with building authority-approved thin sheet screws
- Attractive and unmistakable appearance
- Available in two different profile heights (C24 | C47)
- Module portrait and landscape installation possible
- Insertion rails for frame heights 30-50 mm
- Excellent module rear ventilation (C47)
- Quick mounting with entirely pre-assembled components



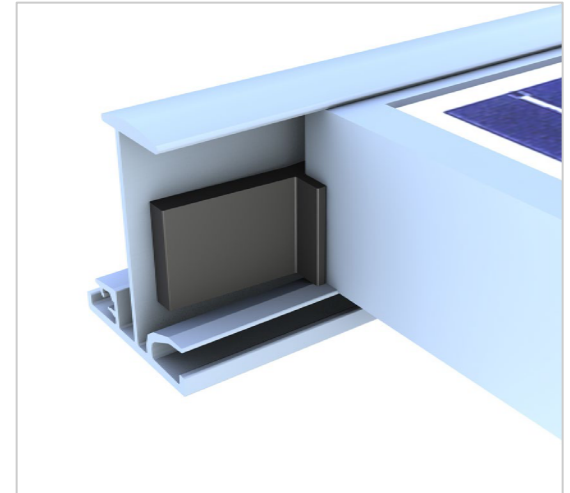
Insertion system with trapezoidal bracket

By choosing our insertion system, you are not only choosing top-quality, stability and security but also a highly attractive appearance for your photovoltaic installation. The module installation happens floating and tension-free – with insertion rails in blank Aluminium or black anodized, depending on the color of your module frame.

No matter if you go for portrait or landscape installation, with only a handful of entirely pre-assembled components you get a stable, durable and aesthetic installation.

Your benefits:

- Fastening with building authority-approved thin sheet screws
- Attractive and unmistakable appearance
- Only a handful of components – entirely pre-assembled
- Insertion rails in blank Aluminium or black anodized
- Quick mounting from above with easily graspable components



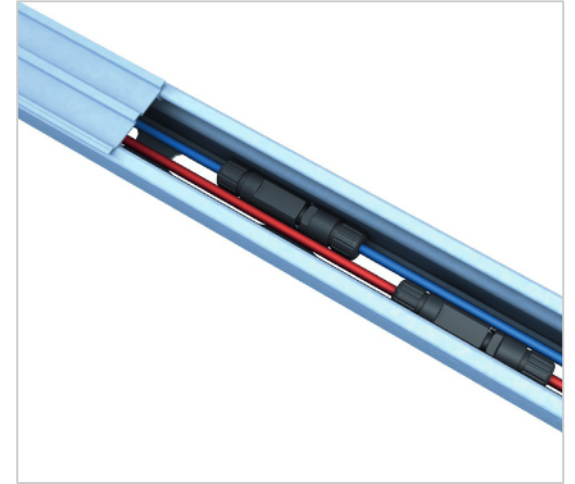
The C-rail – more than just a module support rail

Our C-rail is unique: for each and every application it is available in the right strength and length, usable across all novotegra pitched roof systems.

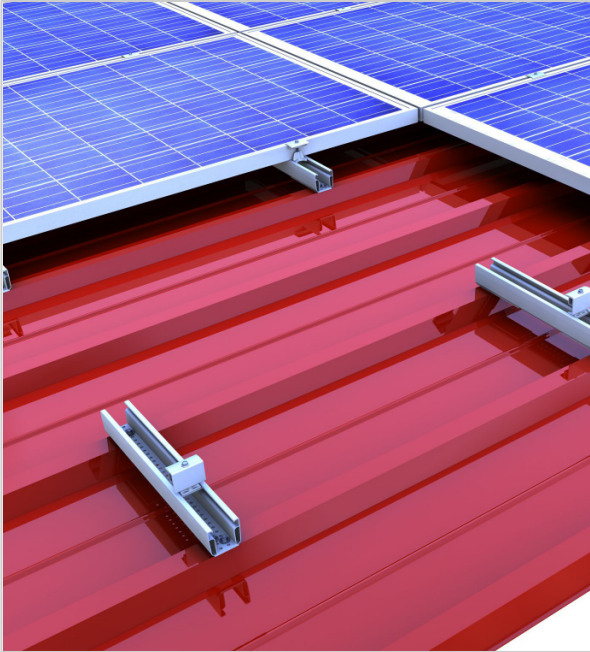
For trapezoidal metal roofs the C-rail is available as a „normal“ rail as well as in short rail versions.

Your benefits at a glance:

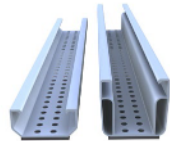
- C-rail also acts as a cable channel – tidy without loose cables, enough space for plugs
- The optional cover protects the cables against damage from UV radiation, animals and humidity
- Quick mounting from above with elongated holes for optimum alignment flexibility
- Large cantilever possible
- Can be stepped on throughout installation (from C47 upwards)
- Rails in blank Aluminium or black anodized
- Unique components, usable across systems
- Installation-friendly clamps with a click-in mechanism for all frame heights in blank Aluminium or black anodized
- Insertion rails in the most popular frame heights in blank Aluminium or black anodized



Clamping system modules portrait with short rail C47 385mm | Details



- Middle and end clamps in blank and black anodized
- Installation-friendly thanks to click-in mechanism
- No falling out or slipping thanks to PE pad underneath the rail nut

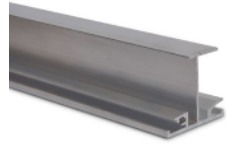
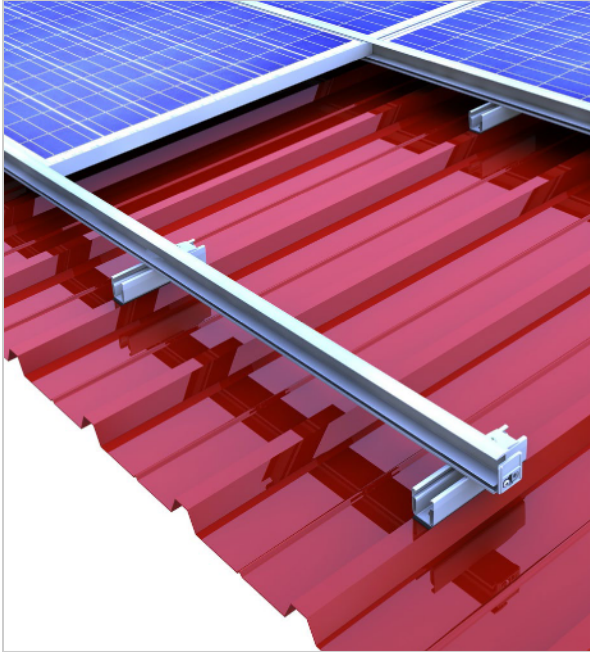


- Available in two different profile heights (C24 | C47)
- Entirely pre-assembled with EPDM-sealing and perforations
- Excellent rear module ventilation
- Quick mounting from above with easily graspable components

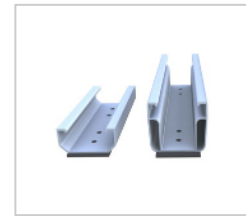


- Fastening with building authority-approved thin sheet screws
- Almost chipless fastening
- High holding forces thanks to funnel formation

Insertion system on short rail | Details



- Insertion rails in blank and black anodized for frame heights 30-50 mm
- Tension-free mounting as well as attractive and unmistakable appearance for module portrait and landscape installation
- Quick mounting, module- and maintenance-friendly



- Available in two different profile heights (C24 | C47)
- Entirely pre-assembled with EPDM-sealing and perforations
- Excellent rear module ventilation
- Quick mounting from above with easily graspable components



- Fastening with building authority-approved thin sheet screws
- Almost chipless fastening
- High holding forces thanks to funnel formation

More components



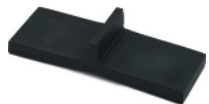
Edge stop set IR

in blank or black anodized for optically tidy rail ends and to prevent modules from falling out.



Grounding connector set

Grounding connector set sufficient for clamping cables of 6-16 mm² or wire with diameter 6-10mm.



EPDM-T protection IR

EPDM-T protection for fixing modules in insertion rails with minimal module slope < 10°.



Contact latch module clamp

Contact latch for equipotential bonding / lightning current carrying capacity between module frame and mounting system.

optional



Top cover C-rail

Cover to clip on to the C-rail if using as cable channel. Protects the cables against damage from UV radiation, animals and humidity.

optional

More components



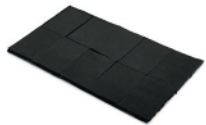
Trapezoidal sheet bracket IR set

Bracket with EPDM seal for fixing insertion rails for framed modules as well as the elevation profile pair on trapezoidal sheet.



Slip guard set for short rail M14

Slip guard for securing the modules mounted in landscape on short rails.



EPDM sealant strip for C-rail 50 x 35 mm

EPDM sealant strip as protection and sealing layer underneath C-rails on trapezoidal metal sheet.



Cross rail connector set C IR M8

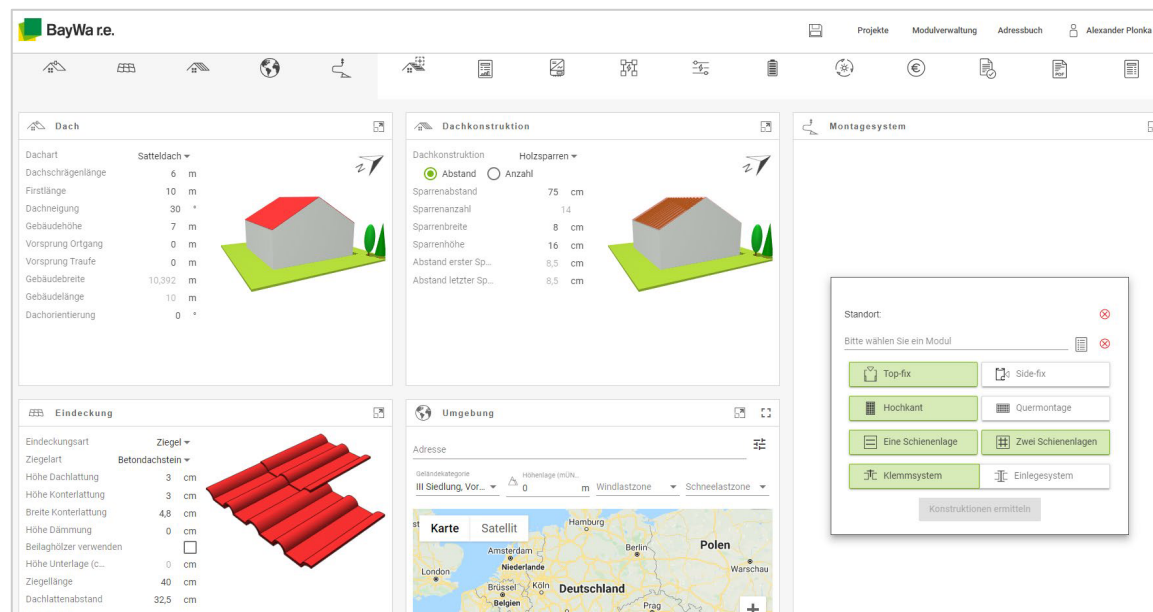
Connector for fixing insertion rails on C-rails and short rails.



Rail connector IR 5 x 100 A2

Connector insertion rail for framed modules in the case of trapezoidal sheet brackets.

Our free planning tool Solar-Planit



Our Solar-Planit

- Complete system planning
 - Mounting system design & static calculation
 - Module configuration
 - Inverter design & suitable storage
 - Yield & profitability
 - System documentation
- System planning in a few minutes thanks to intuitive operation
- Free and web-based incl. free webinars
- Transmission to our webshop
- Availability can already be taken into account during planning

Use our [Solar-Planit!](#)

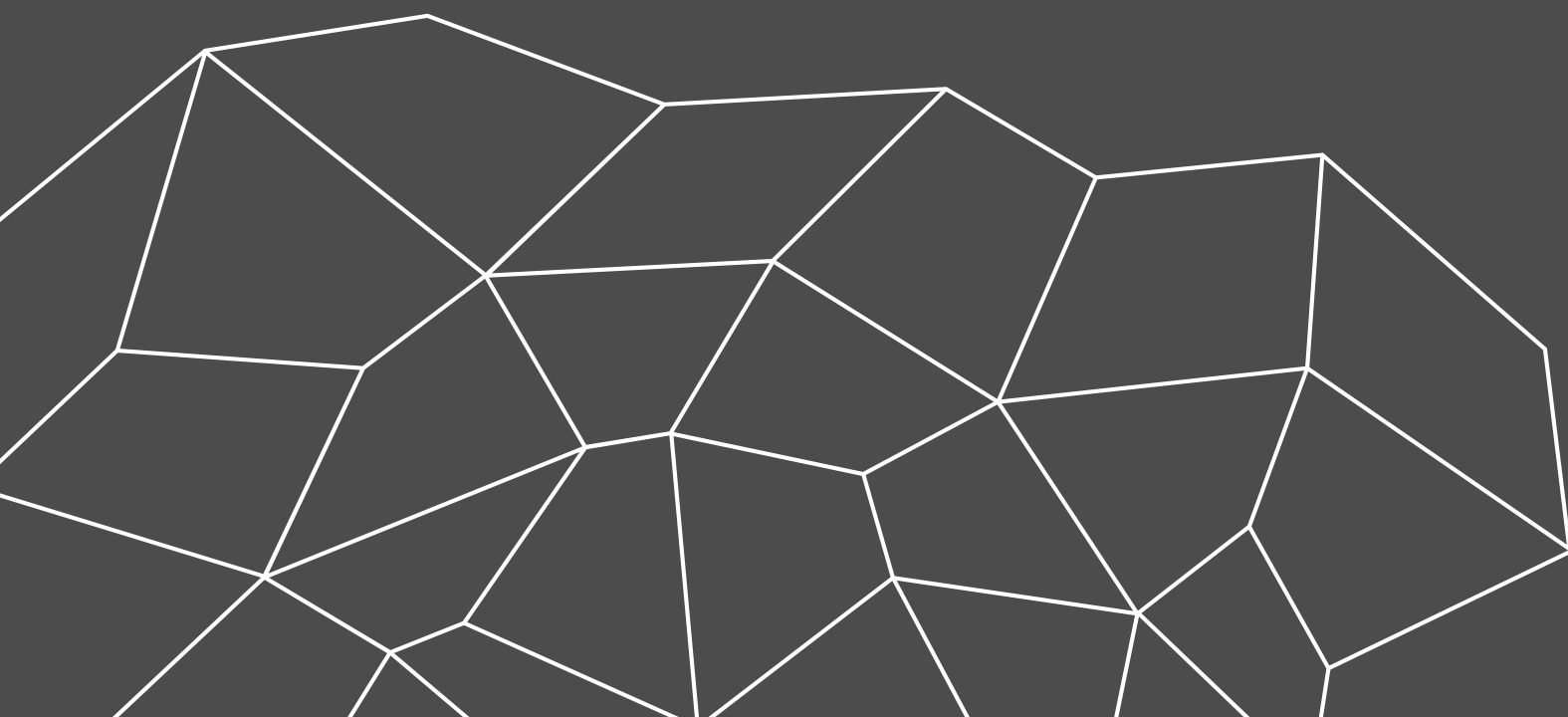
Our free first-time installation support



Our first-time installation support

- Support and instruction by a technical consultant during installation
- Instruction and support around the mounting system
- Discussion of the results of the static calculation
- Tips & tricks around novotegra
- For free!

For more information, please visit our [Website](#) or contact your personal representative!



Thank you!

novotegra GmbH

info@novotegra.com

Copyright

© Copyright novotegra GmbH, 2021

The content of this presentation (including text, graphics, photos, tables, logos, etc.) and the presentation itself are protected by copyright.
They were created by novotegra GmbH independently.

Any dissemination of the presentation and/or content or parts thereof is only permitted with written permission by novotegra without written permission of novotegra, this document and/or parts of it must not be passed on, modified, published, translated or reproduced, either by photocopies, or by others – in particular by electronic procedures. This reservation also extends to inclusion in or evaluation by databases. Infringements will be prosecuted.