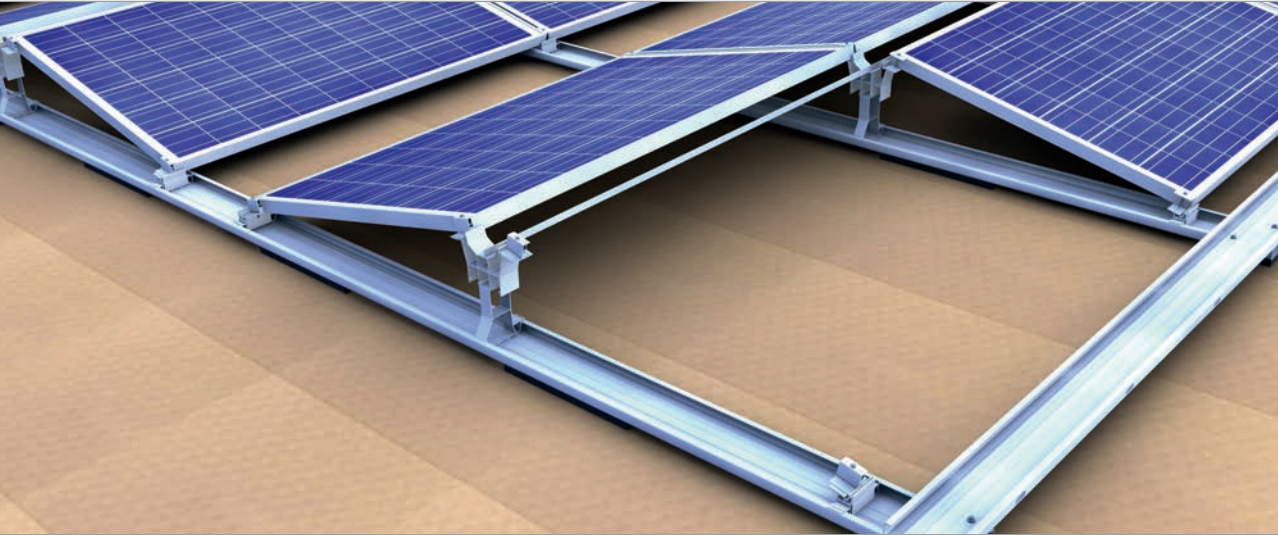


## Flat roof | east-west system II



Flat roof system east-west II

### Our solution for the east-west direction

With our east-west II mounting system, you can optimise the use of the surface area of your flat roof: Compared to southfacing elevations, you can install nearly twice the module surface area. Electricity production is thus distributed more evenly throughout the entire day. The east-west II mounting system is a very secure and stable system for flat roofs with a pitch of up to 5° – and, what is more, it is quick and easy to assemble.

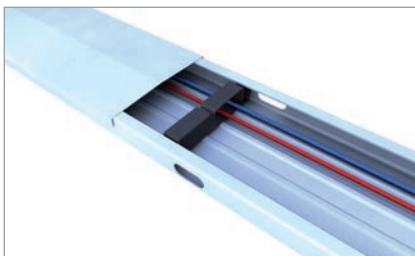
The mounting system is fixed on the roof with its own weight and, if necessary, ballast stones, although the optimised aerodynamics of our system require little to no ballasting: an advantage for flat roofs with low load reserves.

The mounting system consists of only a few components. The substructure is installed in a modular grid. The base foot and the module support are clicked together, and the module fastened by the short side of the frame. The base trough, which can be used as a cable channel, has rounded edges and a separation layer to protect the roof membrane. The system is installed on foil and bitumen roofs and can also be installed on gravel roofs.

Our various supports allow us to tailor solutions to the specific loads – even with heavy load requirements. Per default, we can subject the east-west II mounting system to loads of 2.4 kN/ m<sup>2</sup>, and with a module clamp on the long side, even up to 4.8 kN/m<sup>2</sup>.

### Your benefits

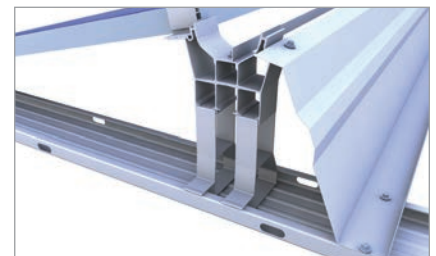
- Secure, stable and quick to install
- Wind-tunnel tested aerodynamics
- No penetration of the roof membrane
- Minimal ballasting
- Optimal angle of inclination of 13°
- More module surface area possible
- Wide base trough with rounded edges
- Ballast trough for large-format stones
- Double support for heavy loads
- Rail with pads for cross drainage
- Only three clamps for all frame heights
- Simple, Eurocode-compliant layout with our Solar-Planit online tool



Base rail with cover and cable holder



Base foot in base trough with connector



Wind deflector East-West for roof obstacles

## Basic components



Base trough	Item no. 03-000989	
Connector set base trough	Item no. 03-000370	
Aluminium edge protector self-adhesive	Item no. 03-000407	
Flat roof mounting screw	Item no. 03-000383	
Base foot	Item no. 03-000343	

## East-west variant

Module support	Item no. 03-001324			
Ballast redistribution	Item no. 03-001281			
Module bracket	Item no. 03-000324		Item no. 03-000326	Item no. 03-000310



BayWa r.e. Solar Energy Systems GmbH | Eisenbahnstraße 150 | D-72072 Tübingen  
 Phone +49 7071 98987-0, Fax +49 7071 98987-10, solarenergysystems@baywa-re.com  
 www.baywa-re.com, solar-distribution.baywa-re.de, novotegra.baywa-re.com

Have you already seen it?

To our novotegra YouTube channel.  
 There you will find helpful videos for  
 installation assistance.

